

This instrument prepared by:

Department of County Lands  
P.O. Box 398  
Fort Myers, FL 33902-0398

INSTR# 2024000102935, Pages 10  
DocType: AGR, Recorded: 4/11/2024 at 3:57 PM  
Kevin C. Karnes, Lee County Clerk of the Court & Comptroller  
Rec Fees: \$86.50

Deputy Clerk CGRINER  
#1

**SUBORDINATION OF UTILITY INTERESTS  
AND AGREEMENT FOR  
REIMBURSEMENT FOR ADDITIONAL FACILITY RELOCATIONS**

THIS AGREEMENT, entered into this 2nd day of April, 2024, by and between LEE COUNTY, a political subdivision of the State of Florida, whose mailing address is P.O. Box 398, Fort Myers, Florida 33902-0398, hereinafter called the "County", and FLORIDA POWER & LIGHT COMPANY, a Florida Corporation, whose mailing address is P. O. Box 14000, Juno Beach, Florida 33408, hereinafter called "Utility".

**W I T N E S E T H:**

WHEREAS, the Utility presently has an interest in certain land that have been determined necessary for highway purposes; and

WHEREAS, the proposed use of these lands for highway purposes will require subordination of the interest claimed in such lands by Utility to the County; and

WHEREAS, the County is willing to pay for any initial relocation of the Utility's facilities within the **Utility's Public right-of-way/Easements** to prevent conflict between the County's use and the Utility's use, and for the benefit of each; and

WHEREAS the County, in addition, in recognition of the Utility's interest in the certain lands, is willing to pay for any future relocation of the Utility's facilities from or within the entire width of the **Utility's Public right-of-way/Easements** shown on Exhibit "A", attached hereto and made a part hereof.

NOW, THEREFORE, in consideration of the mutual covenants and promises of the parties hereto, Utility and County agree as follows:

UTILITY subordinates any and all of its interest in its easement lands illustrated on "**EXHIBIT A**" attached hereto and made a part hereof, to the interest of the County, or its successors, for the purpose of constructing, improving, maintaining and operating a road and appurtenant infrastructure, drainage and public utilities, over, under, through, upon, and/or across such Lands, based on the following:

| Nature of Encumbrance           | Date           | From        | In Favor of                     | Recorded Instrument      |
|---------------------------------|----------------|-------------|---------------------------------|--------------------------|
| <i>Public Utility Easements</i> | <i>3/14/14</i> | <i>Plat</i> | <i>Public/Private Utilities</i> | <i>No. 2014000052328</i> |

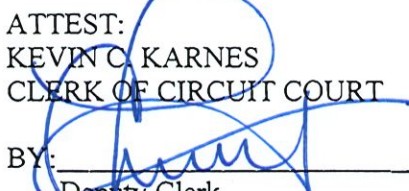
The County and the Utility further agree that:

1. "**Utility's Public right-of-way/Easements**", as used herein, shall mean that area which is shown in Exhibit "A" and which includes the Utility's easements identified above and additional lands for public utility right-of-way, as shown in Exhibit "A", attached hereto and made a part hereof.
2. The Utility shall have the right to construct, operate, maintain, improve, add to, upgrade, remove, and relocate facilities on, within, and upon the **Utility's Public right-of-way/Easements** shown in Exhibit "A", in accordance with the County's current minimum standards for such facilities as of the date of this Agreement. Any new construction or relocation of facilities within the **Utility's Public right-of-way/Easements** will be subject to prior approval by the County.
3. The County shall pay for any relocation of existing facilities. In addition, the Utility retains the right to be reimbursed, either now or in the future, for additional relocation or adjustment of its facilities located presently or to be located on the **Utility's Public right-of-way/Easements** shown in Exhibit "A", if such relocation or adjustment is caused by present or future uses of the **Utility's Public right-of-way/Easements** by County, or its assigns, including, but not limited to, the cost of acquiring replacement easements.
4. The Utility shall have the right to enter upon the lands shown in Exhibit "A" for the purposes outlined in Paragraph 2 above, including the right to trim such trees, brush, and growth which might endanger or interfere with such facilities. County shall provide and ensure access to said lands by the Utility.

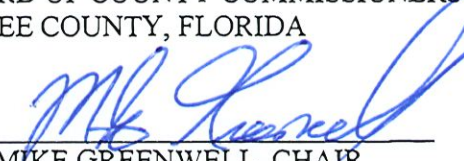
5. The Utility agrees to repair any damage to County facilities and to indemnify the County against any loss or damage resulting from the Utility exercising its rights to construct, operate, maintain, improve, add to, upgrade or remove its facilities on the said **Utility's Public right-of-way/Easements**.
6. This Agreement shall not be assigned by County except to the State of Florida.

IN WITNESS WHEREOF, the parties hereto have executed this Agreement on the day and year first above written.

Approved and accepted for and on behalf of Lee County, Florida, this 2nd day of April, 2024.

ATTEST:  
KEVIN C. KARNES  
CLERK OF CIRCUIT COURT  
BY:   
Deputy Clerk



BOARD OF COUNTY COMMISSIONERS  
OF LEE COUNTY, FLORIDA  
BY:   
MIKE GREENWELL, CHAIR

APPROVED AS TO FORM FOR THE  
RELIANCE OF LEE COUNTY ONLY

BY:   
County Attorney's Office

---

(Execution and Acknowledgement continued on next page)

IN WITNESS WHEREOF, the parties hereto have executed this Agreement on the day and year first above written.

Signed, sealed and delivered  
in the presence of:

FLORIDA POWER & LIGHT COMPANY

By: [Signature]  
Print Name: Matthew C. Jenkins

By: [Signature]  
Title: Corporate Real Estate Manager  
Print Name:

By: [Signature]  
Print Name: Celine Williams

(Corp. Seal)

STATE OF FLORIDA, COUNTY OF Charlotte

I hereby certify that the foregoing instrument was acknowledged before me by means of  physical presence or  online notarization, this 1st day of March, 2024, by Cameron Crenshaw to me known and personally known to me to be the person described in, and did not take an oath and who executed the foregoing instrument as its Corporate Real Estate Manager of the Florida Power & Light Company and acknowledged before me that he executed the same as such official in the name and on behalf of said Corporation.

WITNESS my hand and official seal in the County and State aforesaid this 1st day of March, 2024.

My Commission Expires: 02.13.27

Notary Signature: [Signature]  
Notary Public State of Florida  
Printed Name: Celine Williams

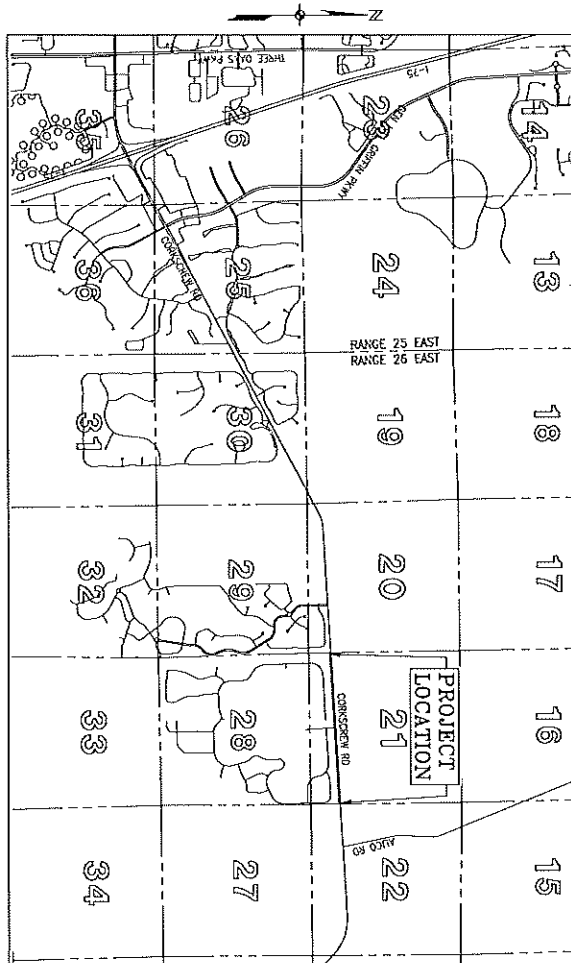


# BOUNDARY SURVEY

## FOR

### "CORKSCREW SHORES RIGHT-OF-WAY PARCELS 321, 322A, 322B, 323, 324, 325 AND 326"

#### SECTION 21, TOWNSHIP 46 SOUTH, RANGE 26 EAST VILLAGE OF ESTERO, LEE COUNTY, FLORIDA



**NOTES:**

1. THE ANGLES OF THE REC SURVEY PARCELS AND ADJACENT PREVIOUSLY EXISTING WERE FIELD SURVEYED.
2. THE DATE OF LAST REVISIONS MAY BE 2022.
3. COMPUTED AND VERIFICATION DATA SHOW HEREON ARE IN FEET AND ARE PROJECTED ONTO THE ADJACENT TOWN PLAT CORNER TO CORNER WITH STATE PLANNED SURVEY OF 1988 (LWS82) 2511.
4. BEARINGS SHOWN HEREON ARE BASED ON FINDING THE SOUTHERLY RIGHT-OF-WAY OF CONCRETE ROAD, AS SHOWN HEREON, WOODEN SAND SOUTHERLY RIGHT-OF-WAY BEARS N40D2329E.
5. BEARINGS SHOWN HEREON ARE BASED ON MEASUREMENTS OF RECORDS PLATS AND ADJACENT WELLS AND THE LEE COUNTY LINDSEY RESERVE.
6. THE BEARINGS OF PLATTS FOR CONCRETE SHEDS ARE NOT INCLUDED HEREON AT THE REQUEST OF THE CLIENT.
7. UNDERGROUND IMPROVEMENTS AND/OR DISCONTINUITIES WERE NOT LOCATED AS A PART OF THIS SURVEY.
8. THIS SURVEY DOES NOT MAKE ANY REPRESENTATION AS TO ZONING OR DEVELOPMENT RESTRICTIONS ON THE SUBJECT PARCEL.
9. NO DEVELOPMENT, AGREEMENT OR ADJUT WAS PERFORMED ON THE SUBJECT PARCEL BY THIS PARTY, THIS PARTY'S ENGINEER OR ANY OTHER PARTY AND THIS SURVEY IS NOT TO BE CONSIDERED AS A BASIS FOR THE DETERMINATION OF ANY SUBSEQUENT LINES OF CREDIT OR ANY OTHER PARTY'S OBLIGATION TO PAYMENT TO EXCLUDE THE RESOLUTION JURISDICTION OF ANY FEDERAL, STATE OR LOCAL AGENCY.
10. THE SURVEY WAS CONDUCTED IN ACCORDANCE WITH THE PROFESSIONAL STANDARDS OF THE SURVEYING AND MAPPING BOARD OF THE STATE OF FLORIDA.
11. ADJUSTMENTS OR DEVIATIONS TO THIS SURVEY MAY BE REQUESTED BY OTHER THAN THE SURVEY PARTY IS PROHIBITED WITHOUT THE WRITTEN CONSENT OF THE SURVEY PARTY.
12. THIS SURVEY IS SUBJECT TO ANY FACTS THAT MAY BE DISCOVERED BY A TITLE AND ABSTRACT TITLE SEARCH, A TITLE COMMITMENT AND/OR ABSTRACT OF TITLE WAS NOT PROVIDED TO THE SURVEYOR.

Mark D. Haines  
 PSM 155312  
 State of Florida  
 Division of Surveying  
 3000 Gandy Blvd  
 Tallahassee, Florida 32309-0001  
 Date: 02/22/2024 09:16:49  
 0490

THIS SURVEY IS ONLY FOR THE REPORT IN THE ATTACHED PLAT. NO OTHER PERSON OR ENTITY MAY RELY ON THIS SURVEY. I HEREBY CERTIFY TO THE BEST OF MY KNOWLEDGE AND BELIEF THAT I AM A LICENSED PROFESSIONAL SURVEYOR IN THE STATE OF FLORIDA AND THAT I AM THE AUTHOR OF THIS SURVEY. I HAVE NOT BEEN CONVICTED OF ANY CRIME THAT WOULD DISQUALIFY ME FROM PRACTICING AS A SURVEYOR IN THE STATE OF FLORIDA. I HAVE NOT BEEN CONVICTED OF ANY CRIME THAT WOULD DISQUALIFY ME FROM PRACTICING AS A SURVEYOR IN THE STATE OF FLORIDA.

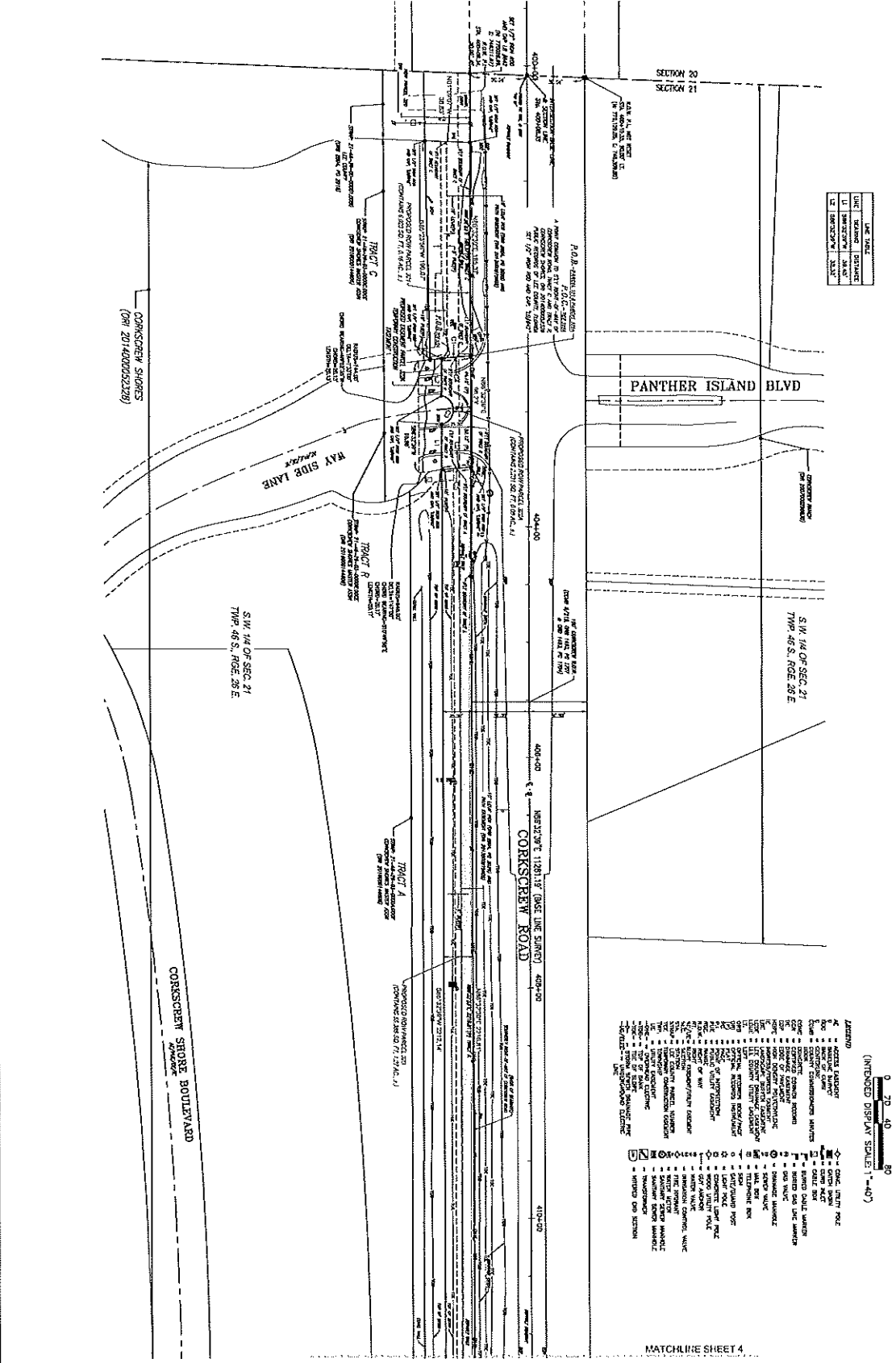
SEE SHEET 2 OF 7 FOR BOUNDARY PARCEL DESCRIPTIONS

| <b>JOHNSON</b><br>ENGINEERING<br>10000 W. US HWY 90<br>SUITE 200<br>TAMPA, FL 33613<br>TEL: 813.241.1111<br>FAX: 813.241.1112 | "CORKSCREW SHORES<br>RIGHT-OF-WAY PARCELS 321,<br>322A, 322B, 323, 324, 325 AND 326"<br>SECTION 21, TOWNSHIP 46 SOUTH, RANGE 26 EAST<br>VILLAGE OF ESTERO, LEE COUNTY, FLORIDA  | BOUNDARY SURVEY |      |             |   |          |                |  |  |
|---|---|-----------------|------|-------------|---|----------|----------------|--|--|
| SHEET NUMBER<br><b>1 OF 7</b>   | REVISIONS<br><table border="1" style="width: 100%; border-collapse: collapse;"> <thead> <tr> <th>NO.</th> <th>DATE</th> <th>DESCRIPTION</th> </tr> </thead> <tbody> <tr> <td>1</td> <td>04/11/22</td> <td>INITIAL SURVEY</td> </tr> </tbody> </table> | NO.             | DATE | DESCRIPTION | 1 | 04/11/22 | INITIAL SURVEY |  |  |
| NO.   | DATE  | DESCRIPTION     |      |             |   |          |                |  |  |
| 1   | 04/11/22  | INITIAL SURVEY  |      |             |   |          |                |  |  |
| COVER SHEET   |   |                 |      |             |   |          |                |  |  |

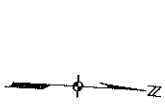


| LINE | START | END  | DESCRIPTION   |
|------|-------|------|---------------|
| 1    | 0+00  | 0+00 | START OF ROAD |
| 2    | 0+00  | 0+00 | START OF ROAD |
| 3    | 0+00  | 0+00 | START OF ROAD |
| 4    | 0+00  | 0+00 | START OF ROAD |
| 5    | 0+00  | 0+00 | START OF ROAD |
| 6    | 0+00  | 0+00 | START OF ROAD |
| 7    | 0+00  | 0+00 | START OF ROAD |
| 8    | 0+00  | 0+00 | START OF ROAD |
| 9    | 0+00  | 0+00 | START OF ROAD |
| 10   | 0+00  | 0+00 | START OF ROAD |

SEE SHEET 2 OF 7 FOR BOUNDARY PARCEL DESCRIPTIONS



- LEGEND
- 1" = 100'
  - 2" = 200'
  - 3" = 300'
  - 4" = 400'
  - 5" = 500'
  - 6" = 600'
  - 7" = 700'
  - 8" = 800'
  - 9" = 900'
  - 10" = 1000'
  - 11" = 1100'
  - 12" = 1200'
  - 13" = 1300'
  - 14" = 1400'
  - 15" = 1500'
  - 16" = 1600'
  - 17" = 1700'
  - 18" = 1800'
  - 19" = 1900'
  - 20" = 2000'
  - 21" = 2100'
  - 22" = 2200'
  - 23" = 2300'
  - 24" = 2400'
  - 25" = 2500'
  - 26" = 2600'
  - 27" = 2700'
  - 28" = 2800'
  - 29" = 2900'
  - 30" = 3000'
  - 31" = 3100'
  - 32" = 3200'
  - 33" = 3300'
  - 34" = 3400'
  - 35" = 3500'
  - 36" = 3600'
  - 37" = 3700'
  - 38" = 3800'
  - 39" = 3900'
  - 40" = 4000'
  - 41" = 4100'
  - 42" = 4200'
  - 43" = 4300'
  - 44" = 4400'
  - 45" = 4500'
  - 46" = 4600'
  - 47" = 4700'
  - 48" = 4800'
  - 49" = 4900'
  - 50" = 5000'



| DATE | REVISIONS | DESCRIPTION |
|------|-----------|-------------|
|      |           |             |
|      |           |             |
|      |           |             |
|      |           |             |
|      |           |             |
|      |           |             |
|      |           |             |
|      |           |             |
|      |           |             |
|      |           |             |

"CORKSCREW SHORES  
RIGHT-OF-WAY PARCELS 321,  
322A, 322B, 323, 324, 325 AND 326"  
SECTION 21, TOWNSHIP 49 SOUTH, RANGE 26 EAST  
VILLAGE OF ESTERO, LEE COUNTY, FLORIDA

JOHNSON ENGINEERING  
2000 UNIVERSITY BLVD, SUITE 200  
FORT MYERS, FL 33907  
TEL: 888-888-8888  
WWW.JOHNSONENGINEERING.COM

BOUNDARY SURVEY

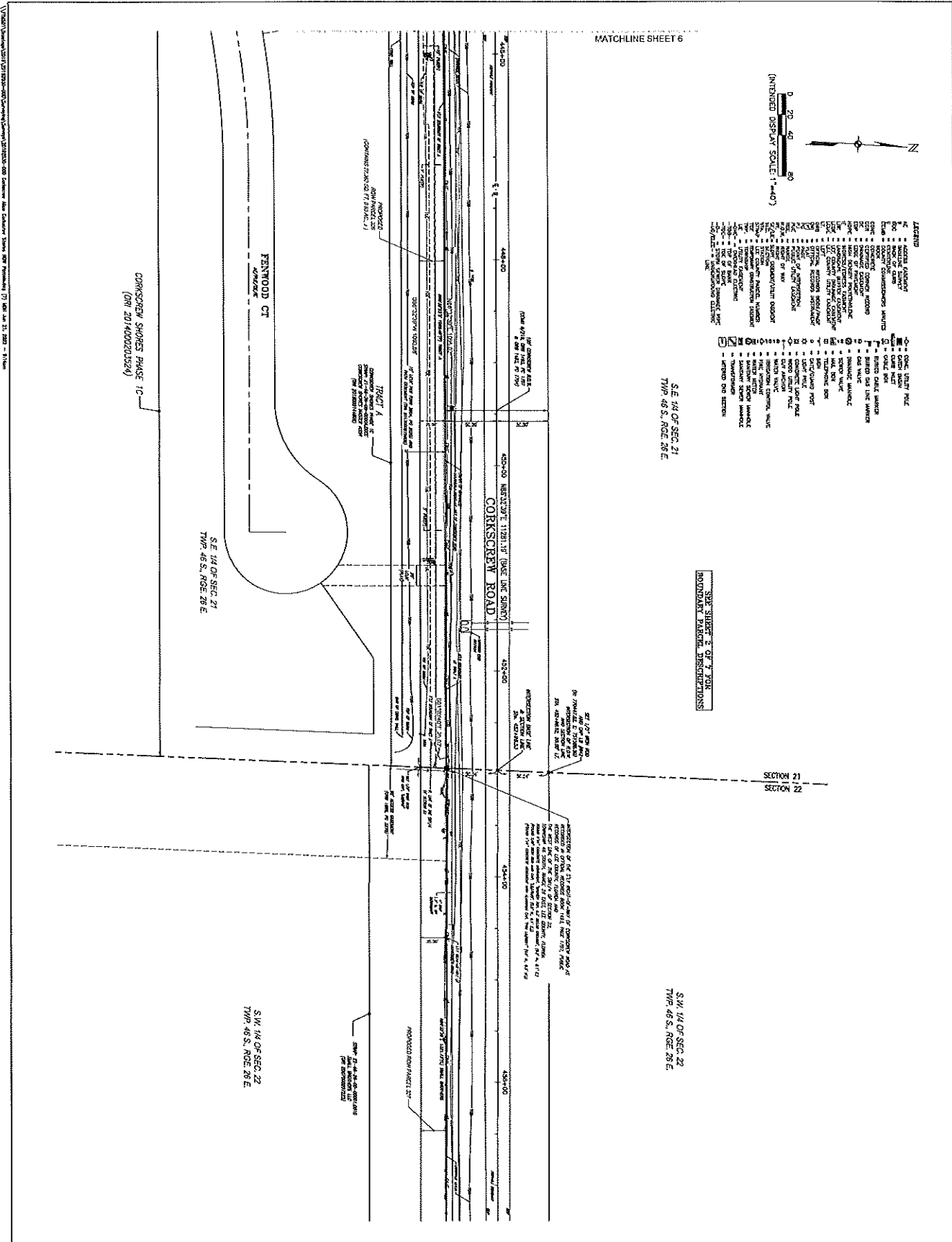
3 OF 7











- LEGEND
- 1 = METAL CORNER
  - 2 = BRASS CORNER
  - 3 = IRON CORNER
  - 4 = CEMENT CORNER
  - 5 = CONCRETE CORNER
  - 6 = WOOD CORNER
  - 7 = BRASS DISK MARKER
  - 8 = IRON DISK MARKER
  - 9 = CEMENT DISK MARKER
  - 10 = CONCRETE DISK MARKER
  - 11 = WOOD DISK MARKER
  - 12 = BRASS NAIL MARKER
  - 13 = IRON NAIL MARKER
  - 14 = CEMENT NAIL MARKER
  - 15 = CONCRETE NAIL MARKER
  - 16 = WOOD NAIL MARKER
  - 17 = BRASS PIN MARKER
  - 18 = IRON PIN MARKER
  - 19 = CEMENT PIN MARKER
  - 20 = CONCRETE PIN MARKER
  - 21 = WOOD PIN MARKER
  - 22 = BRASS BOLT MARKER
  - 23 = IRON BOLT MARKER
  - 24 = CEMENT BOLT MARKER
  - 25 = CONCRETE BOLT MARKER
  - 26 = WOOD BOLT MARKER
  - 27 = BRASS WIRE MARKER
  - 28 = IRON WIRE MARKER
  - 29 = CEMENT WIRE MARKER
  - 30 = CONCRETE WIRE MARKER
  - 31 = WOOD WIRE MARKER
  - 32 = BRASS STRAP MARKER
  - 33 = IRON STRAP MARKER
  - 34 = CEMENT STRAP MARKER
  - 35 = CONCRETE STRAP MARKER
  - 36 = WOOD STRAP MARKER
  - 37 = BRASS RING MARKER
  - 38 = IRON RING MARKER
  - 39 = CEMENT RING MARKER
  - 40 = CONCRETE RING MARKER
  - 41 = WOOD RING MARKER
  - 42 = BRASS PLATE MARKER
  - 43 = IRON PLATE MARKER
  - 44 = CEMENT PLATE MARKER
  - 45 = CONCRETE PLATE MARKER
  - 46 = WOOD PLATE MARKER
  - 47 = BRASS TUBE MARKER
  - 48 = IRON TUBE MARKER
  - 49 = CEMENT TUBE MARKER
  - 50 = CONCRETE TUBE MARKER
  - 51 = WOOD TUBE MARKER
  - 52 = BRASS CUBE MARKER
  - 53 = IRON CUBE MARKER
  - 54 = CEMENT CUBE MARKER
  - 55 = CONCRETE CUBE MARKER
  - 56 = WOOD CUBE MARKER
  - 57 = BRASS SPHERE MARKER
  - 58 = IRON SPHERE MARKER
  - 59 = CEMENT SPHERE MARKER
  - 60 = CONCRETE SPHERE MARKER
  - 61 = WOOD SPHERE MARKER
  - 62 = BRASS CYLINDER MARKER
  - 63 = IRON CYLINDER MARKER
  - 64 = CEMENT CYLINDER MARKER
  - 65 = CONCRETE CYLINDER MARKER
  - 66 = WOOD CYLINDER MARKER
  - 67 = BRASS CONE MARKER
  - 68 = IRON CONE MARKER
  - 69 = CEMENT CONE MARKER
  - 70 = CONCRETE CONE MARKER
  - 71 = WOOD CONE MARKER
  - 72 = BRASS PYRAMID MARKER
  - 73 = IRON PYRAMID MARKER
  - 74 = CEMENT PYRAMID MARKER
  - 75 = CONCRETE PYRAMID MARKER
  - 76 = WOOD PYRAMID MARKER
  - 77 = BRASS TRIANGLE MARKER
  - 78 = IRON TRIANGLE MARKER
  - 79 = CEMENT TRIANGLE MARKER
  - 80 = CONCRETE TRIANGLE MARKER
  - 81 = WOOD TRIANGLE MARKER
  - 82 = BRASS SQUARE MARKER
  - 83 = IRON SQUARE MARKER
  - 84 = CEMENT SQUARE MARKER
  - 85 = CONCRETE SQUARE MARKER
  - 86 = WOOD SQUARE MARKER
  - 87 = BRASS RECTANGLE MARKER
  - 88 = IRON RECTANGLE MARKER
  - 89 = CEMENT RECTANGLE MARKER
  - 90 = CONCRETE RECTANGLE MARKER
  - 91 = WOOD RECTANGLE MARKER
  - 92 = BRASS DIAGONAL MARKER
  - 93 = IRON DIAGONAL MARKER
  - 94 = CEMENT DIAGONAL MARKER
  - 95 = CONCRETE DIAGONAL MARKER
  - 96 = WOOD DIAGONAL MARKER
  - 97 = BRASS STAR MARKER
  - 98 = IRON STAR MARKER
  - 99 = CEMENT STAR MARKER
  - 100 = CONCRETE STAR MARKER
  - 101 = WOOD STAR MARKER
  - 102 = BRASS CROSS MARKER
  - 103 = IRON CROSS MARKER
  - 104 = CEMENT CROSS MARKER
  - 105 = CONCRETE CROSS MARKER
  - 106 = WOOD CROSS MARKER
  - 107 = BRASS X MARKER
  - 108 = IRON X MARKER
  - 109 = CEMENT X MARKER
  - 110 = CONCRETE X MARKER
  - 111 = WOOD X MARKER
  - 112 = BRASS PLUS MARKER
  - 113 = IRON PLUS MARKER
  - 114 = CEMENT PLUS MARKER
  - 115 = CONCRETE PLUS MARKER
  - 116 = WOOD PLUS MARKER
  - 117 = BRASS MINUS MARKER
  - 118 = IRON MINUS MARKER
  - 119 = CEMENT MINUS MARKER
  - 120 = CONCRETE MINUS MARKER
  - 121 = WOOD MINUS MARKER
  - 122 = BRASS EQUAL MARKER
  - 123 = IRON EQUAL MARKER
  - 124 = CEMENT EQUAL MARKER
  - 125 = CONCRETE EQUAL MARKER
  - 126 = WOOD EQUAL MARKER
  - 127 = BRASS LESS MARKER
  - 128 = IRON LESS MARKER
  - 129 = CEMENT LESS MARKER
  - 130 = CONCRETE LESS MARKER
  - 131 = WOOD LESS MARKER
  - 132 = BRASS GREATER MARKER
  - 133 = IRON GREATER MARKER
  - 134 = CEMENT GREATER MARKER
  - 135 = CONCRETE GREATER MARKER
  - 136 = WOOD GREATER MARKER
  - 137 = BRASS PERCENT MARKER
  - 138 = IRON PERCENT MARKER
  - 139 = CEMENT PERCENT MARKER
  - 140 = CONCRETE PERCENT MARKER
  - 141 = WOOD PERCENT MARKER
  - 142 = BRASS PERIOD MARKER
  - 143 = IRON PERIOD MARKER
  - 144 = CEMENT PERIOD MARKER
  - 145 = CONCRETE PERIOD MARKER
  - 146 = WOOD PERIOD MARKER
  - 147 = BRASS COMMA MARKER
  - 148 = IRON COMMA MARKER
  - 149 = CEMENT COMMA MARKER
  - 150 = CONCRETE COMMA MARKER
  - 151 = WOOD COMMA MARKER
  - 152 = BRASS COLON MARKER
  - 153 = IRON COLON MARKER
  - 154 = CEMENT COLON MARKER
  - 155 = CONCRETE COLON MARKER
  - 156 = WOOD COLON MARKER
  - 157 = BRASS SEMI COLON MARKER
  - 158 = IRON SEMI COLON MARKER
  - 159 = CEMENT SEMI COLON MARKER
  - 160 = CONCRETE SEMI COLON MARKER
  - 161 = WOOD SEMI COLON MARKER
  - 162 = BRASS QUOTE MARKER
  - 163 = IRON QUOTE MARKER
  - 164 = CEMENT QUOTE MARKER
  - 165 = CONCRETE QUOTE MARKER
  - 166 = WOOD QUOTE MARKER
  - 167 = BRASS APOSTROPHE MARKER
  - 168 = IRON APOSTROPHE MARKER
  - 169 = CEMENT APOSTROPHE MARKER
  - 170 = CONCRETE APOSTROPHE MARKER
  - 171 = WOOD APOSTROPHE MARKER
  - 172 = BRASS UNDERSCORE MARKER
  - 173 = IRON UNDERSCORE MARKER
  - 174 = CEMENT UNDERSCORE MARKER
  - 175 = CONCRETE UNDERSCORE MARKER
  - 176 = WOOD UNDERSCORE MARKER
  - 177 = BRASS TILDE MARKER
  - 178 = IRON TILDE MARKER
  - 179 = CEMENT TILDE MARKER
  - 180 = CONCRETE TILDE MARKER
  - 181 = WOOD TILDE MARKER
  - 182 = BRASS CARET MARKER
  - 183 = IRON CARET MARKER
  - 184 = CEMENT CARET MARKER
  - 185 = CONCRETE CARET MARKER
  - 186 = WOOD CARET MARKER
  - 187 = BRASS AT MARKER
  - 188 = IRON AT MARKER
  - 189 = CEMENT AT MARKER
  - 190 = CONCRETE AT MARKER
  - 191 = WOOD AT MARKER
  - 192 = BRASS AMPERSAND MARKER
  - 193 = IRON AMPERSAND MARKER
  - 194 = CEMENT AMPERSAND MARKER
  - 195 = CONCRETE AMPERSAND MARKER
  - 196 = WOOD AMPERSAND MARKER
  - 197 = BRASS DOLLAR MARKER
  - 198 = IRON DOLLAR MARKER
  - 199 = CEMENT DOLLAR MARKER
  - 200 = CONCRETE DOLLAR MARKER
  - 201 = WOOD DOLLAR MARKER
  - 202 = BRASS POUND MARKER
  - 203 = IRON POUND MARKER
  - 204 = CEMENT POUND MARKER
  - 205 = CONCRETE POUND MARKER
  - 206 = WOOD POUND MARKER
  - 207 = BRASS CENTS MARKER
  - 208 = IRON CENTS MARKER
  - 209 = CEMENT CENTS MARKER
  - 210 = CONCRETE CENTS MARKER
  - 211 = WOOD CENTS MARKER
  - 212 = BRASS PERCENT SIGN MARKER
  - 213 = IRON PERCENT SIGN MARKER
  - 214 = CEMENT PERCENT SIGN MARKER
  - 215 = CONCRETE PERCENT SIGN MARKER
  - 216 = WOOD PERCENT SIGN MARKER
  - 217 = BRASS PERCENT SIGN MARKER
  - 218 = IRON PERCENT SIGN MARKER
  - 219 = CEMENT PERCENT SIGN MARKER
  - 220 = CONCRETE PERCENT SIGN MARKER
  - 221 = WOOD PERCENT SIGN MARKER
  - 222 = BRASS PERCENT SIGN MARKER
  - 223 = IRON PERCENT SIGN MARKER
  - 224 = CEMENT PERCENT SIGN MARKER
  - 225 = CONCRETE PERCENT SIGN MARKER
  - 226 = WOOD PERCENT SIGN MARKER
  - 227 = BRASS PERCENT SIGN MARKER
  - 228 = IRON PERCENT SIGN MARKER
  - 229 = CEMENT PERCENT SIGN MARKER
  - 230 = CONCRETE PERCENT SIGN MARKER
  - 231 = WOOD PERCENT SIGN MARKER
  - 232 = BRASS PERCENT SIGN MARKER
  - 233 = IRON PERCENT SIGN MARKER
  - 234 = CEMENT PERCENT SIGN MARKER
  - 235 = CONCRETE PERCENT SIGN MARKER
  - 236 = WOOD PERCENT SIGN MARKER
  - 237 = BRASS PERCENT SIGN MARKER
  - 238 = IRON PERCENT SIGN MARKER
  - 239 = CEMENT PERCENT SIGN MARKER
  - 240 = CONCRETE PERCENT SIGN MARKER
  - 241 = WOOD PERCENT SIGN MARKER
  - 242 = BRASS PERCENT SIGN MARKER
  - 243 = IRON PERCENT SIGN MARKER
  - 244 = CEMENT PERCENT SIGN MARKER
  - 245 = CONCRETE PERCENT SIGN MARKER
  - 246 = WOOD PERCENT SIGN MARKER
  - 247 = BRASS PERCENT SIGN MARKER
  - 248 = IRON PERCENT SIGN MARKER
  - 249 = CEMENT PERCENT SIGN MARKER
  - 250 = CONCRETE PERCENT SIGN MARKER
  - 251 = WOOD PERCENT SIGN MARKER
  - 252 = BRASS PERCENT SIGN MARKER
  - 253 = IRON PERCENT SIGN MARKER
  - 254 = CEMENT PERCENT SIGN MARKER
  - 255 = CONCRETE PERCENT SIGN MARKER
  - 256 = WOOD PERCENT SIGN MARKER
  - 257 = BRASS PERCENT SIGN MARKER
  - 258 = IRON PERCENT SIGN MARKER
  - 259 = CEMENT PERCENT SIGN MARKER
  - 260 = CONCRETE PERCENT SIGN MARKER
  - 261 = WOOD PERCENT SIGN MARKER
  - 262 = BRASS PERCENT SIGN MARKER
  - 263 = IRON PERCENT SIGN MARKER
  - 264 = CEMENT PERCENT SIGN MARKER
  - 265 = CONCRETE PERCENT SIGN MARKER
  - 266 = WOOD PERCENT SIGN MARKER
  - 267 = BRASS PERCENT SIGN MARKER
  - 268 = IRON PERCENT SIGN MARKER
  - 269 = CEMENT PERCENT SIGN MARKER
  - 270 = CONCRETE PERCENT SIGN MARKER
  - 271 = WOOD PERCENT SIGN MARKER
  - 272 = BRASS PERCENT SIGN MARKER
  - 273 = IRON PERCENT SIGN MARKER
  - 274 = CEMENT PERCENT SIGN MARKER
  - 275 = CONCRETE PERCENT SIGN MARKER
  - 276 = WOOD PERCENT SIGN MARKER
  - 277 = BRASS PERCENT SIGN MARKER
  - 278 = IRON PERCENT SIGN MARKER
  - 279 = CEMENT PERCENT SIGN MARKER
  - 280 = CONCRETE PERCENT SIGN MARKER
  - 281 = WOOD PERCENT SIGN MARKER
  - 282 = BRASS PERCENT SIGN MARKER
  - 283 = IRON PERCENT SIGN MARKER
  - 284 = CEMENT PERCENT SIGN MARKER
  - 285 = CONCRETE PERCENT SIGN MARKER
  - 286 = WOOD PERCENT SIGN MARKER
  - 287 = BRASS PERCENT SIGN MARKER
  - 288 = IRON PERCENT SIGN MARKER
  - 289 = CEMENT PERCENT SIGN MARKER
  - 290 = CONCRETE PERCENT SIGN MARKER
  - 291 = WOOD PERCENT SIGN MARKER
  - 292 = BRASS PERCENT SIGN MARKER
  - 293 = IRON PERCENT SIGN MARKER
  - 294 = CEMENT PERCENT SIGN MARKER
  - 295 = CONCRETE PERCENT SIGN MARKER
  - 296 = WOOD PERCENT SIGN MARKER
  - 297 = BRASS PERCENT SIGN MARKER
  - 298 = IRON PERCENT SIGN MARKER
  - 299 = CEMENT PERCENT SIGN MARKER
  - 300 = CONCRETE PERCENT SIGN MARKER
  - 301 = WOOD PERCENT SIGN MARKER
  - 302 = BRASS PERCENT SIGN MARKER
  - 303 = IRON PERCENT SIGN MARKER
  - 304 = CEMENT PERCENT SIGN MARKER
  - 305 = CONCRETE PERCENT SIGN MARKER
  - 306 = WOOD PERCENT SIGN MARKER
  - 307 = BRASS PERCENT SIGN MARKER
  - 308 = IRON PERCENT SIGN MARKER
  - 309 = CEMENT PERCENT SIGN MARKER
  - 310 = CONCRETE PERCENT SIGN MARKER
  - 311 = WOOD PERCENT SIGN MARKER
  - 312 = BRASS PERCENT SIGN MARKER
  - 313 = IRON PERCENT SIGN MARKER
  - 314 = CEMENT PERCENT SIGN MARKER
  - 315 = CONCRETE PERCENT SIGN MARKER
  - 316 = WOOD PERCENT SIGN MARKER
  - 317 = BRASS PERCENT SIGN MARKER
  - 318 = IRON PERCENT SIGN MARKER
  - 319 = CEMENT PERCENT SIGN MARKER
  - 320 = CONCRETE PERCENT SIGN MARKER
  - 321 = WOOD PERCENT SIGN MARKER
  - 322 = BRASS PERCENT SIGN MARKER
  - 323 = IRON PERCENT SIGN MARKER
  - 324 = CEMENT PERCENT SIGN MARKER
  - 325 = CONCRETE PERCENT SIGN MARKER
  - 326 = WOOD PERCENT SIGN MARKER
  - 327 = BRASS PERCENT SIGN MARKER
  - 328 = IRON PERCENT SIGN MARKER
  - 329 = CEMENT PERCENT SIGN MARKER
  - 330 = CONCRETE PERCENT SIGN MARKER
  - 331 = WOOD PERCENT SIGN MARKER
  - 332 = BRASS PERCENT SIGN MARKER
  - 333 = IRON PERCENT SIGN MARKER
  - 334 = CEMENT PERCENT SIGN MARKER
  - 335 = CONCRETE PERCENT SIGN MARKER
  - 336 = WOOD PERCENT SIGN MARKER
  - 337 = BRASS PERCENT SIGN MARKER
  - 338 = IRON PERCENT SIGN MARKER
  - 339 = CEMENT PERCENT SIGN MARKER
  - 340 = CONCRETE PERCENT SIGN MARKER
  - 341 = WOOD PERCENT SIGN MARKER
  - 342 = BRASS PERCENT SIGN MARKER
  - 343 = IRON PERCENT SIGN MARKER
  - 344 = CEMENT PERCENT SIGN MARKER
  - 345 = CONCRETE PERCENT SIGN MARKER
  - 346 = WOOD PERCENT SIGN MARKER
  - 347 = BRASS PERCENT SIGN MARKER
  - 348 = IRON PERCENT SIGN MARKER
  - 349 = CEMENT PERCENT SIGN MARKER
  - 350 = CONCRETE PERCENT SIGN MARKER
  - 351 = WOOD PERCENT SIGN MARKER
  - 352 = BRASS PERCENT SIGN MARKER
  - 353 = IRON PERCENT SIGN MARKER
  - 354 = CEMENT PERCENT SIGN MARKER
  - 355 = CONCRETE PERCENT SIGN MARKER
  - 356 = WOOD PERCENT SIGN MARKER
  - 357 = BRASS PERCENT SIGN MARKER
  - 358 = IRON PERCENT SIGN MARKER
  - 359 = CEMENT PERCENT SIGN MARKER
  - 360 = CONCRETE PERCENT SIGN MARKER
  - 361 = WOOD PERCENT SIGN MARKER
  - 362 = BRASS PERCENT SIGN MARKER
  - 363 = IRON PERCENT SIGN MARKER
  - 364 = CEMENT PERCENT SIGN MARKER
  - 365 = CONCRETE PERCENT SIGN MARKER
  - 366 = WOOD PERCENT SIGN MARKER
  - 367 = BRASS PERCENT SIGN MARKER
  - 368 = IRON PERCENT SIGN MARKER
  - 369 = CEMENT PERCENT SIGN MARKER
  - 370 = CONCRETE PERCENT SIGN MARKER
  - 371 = WOOD PERCENT SIGN MARKER
  - 372 = BRASS PERCENT SIGN MARKER
  - 373 = IRON PERCENT SIGN MARKER
  - 374 = CEMENT PERCENT SIGN MARKER
  - 375 = CONCRETE PERCENT SIGN MARKER
  - 376 = WOOD PERCENT SIGN MARKER
  - 377 = BRASS PERCENT SIGN MARKER
  - 378 = IRON PERCENT SIGN MARKER
  - 379 = CEMENT PERCENT SIGN MARKER
  - 380 = CONCRETE PERCENT SIGN MARKER
  - 381 = WOOD PERCENT SIGN MARKER
  - 382 = BRASS PERCENT SIGN MARKER
  - 383 = IRON PERCENT SIGN MARKER
  - 384 = CEMENT PERCENT SIGN MARKER
  - 385 = CONCRETE PERCENT SIGN MARKER
  - 386 = WOOD PERCENT SIGN MARKER
  - 387 = BRASS PERCENT SIGN MARKER
  - 388 = IRON PERCENT SIGN MARKER
  - 389 = CEMENT PERCENT SIGN MARKER
  - 390 = CONCRETE PERCENT SIGN MARKER
  - 391 = WOOD PERCENT SIGN MARKER
  - 392 = BRASS PERCENT SIGN MARKER
  - 393 = IRON PERCENT SIGN MARKER
  - 394 = CEMENT PERCENT SIGN MARKER
  - 395 = CONCRETE PERCENT SIGN MARKER
  - 396 = WOOD PERCENT SIGN MARKER
  - 397 = BRASS PERCENT SIGN MARKER
  - 398 = IRON PERCENT SIGN MARKER
  - 399 = CEMENT PERCENT SIGN MARKER
  - 400 = CONCRETE PERCENT SIGN MARKER
  - 401 = WOOD PERCENT SIGN MARKER
  - 402 = BRASS PERCENT SIGN MARKER
  - 403 = IRON PERCENT SIGN MARKER
  - 404 = CEMENT PERCENT SIGN MARKER
  - 405 = CONCRETE PERCENT SIGN MARKER
  - 406 = WOOD PERCENT SIGN MARKER
  - 407 = BRASS PERCENT SIGN MARKER
  - 408 = IRON PERCENT SIGN MARKER
  - 409 = CEMENT PERCENT SIGN MARKER
  - 410 = CONCRETE PERCENT SIGN MARKER
  - 411 = WOOD PERCENT SIGN MARKER
  - 412 = BRASS PERCENT SIGN MARKER
  - 413 = IRON PERCENT SIGN MARKER
  - 414 = CEMENT PERCENT SIGN MARKER
  - 415 = CONCRETE PERCENT SIGN MARKER
  - 416 = WOOD PERCENT SIGN MARKER
  - 417 = BRASS PERCENT SIGN MARKER
  - 418 = IRON PERCENT SIGN MARKER
  - 419 = CEMENT PERCENT SIGN MARKER
  - 420 = CONCRETE PERCENT SIGN MARKER
  - 421 = WOOD PERCENT SIGN MARKER
  - 422 = BRASS PERCENT SIGN MARKER
  - 423 = IRON PERCENT SIGN MARKER
  - 424 = CEMENT PERCENT SIGN MARKER
  - 425 = CONCRETE PERCENT SIGN MARKER
  - 426 = WOOD PERCENT SIGN MARKER
  - 427 = BRASS PERCENT SIGN MARKER
  - 428 = IRON PERCENT SIGN MARKER
  - 429 = CEMENT PERCENT SIGN MARKER
  - 430 = CONCRETE PERCENT SIGN MARKER
  - 431 = WOOD PERCENT SIGN MARKER
  - 432 = BRASS PERCENT SIGN MARKER
  - 433 = IRON PERCENT SIGN MARKER
  - 434 = CEMENT PERCENT SIGN MARKER
  - 435 = CONCRETE PERCENT SIGN MARKER
  - 436 = WOOD PERCENT SIGN MARKER
  - 437 = BRASS PERCENT SIGN MARKER
  - 438 = IRON PERCENT SIGN MARKER
  - 439 = CEMENT PERCENT SIGN MARKER
  - 440 = CONCRETE PERCENT SIGN MARKER
  - 441 = WOOD PERCENT SIGN MARKER
  - 442 = BRASS PERCENT SIGN MARKER
  - 443 = IRON PERCENT SIGN MARKER
  - 444 = CEMENT PERCENT SIGN MARKER
  - 445 = CONCRETE PERCENT SIGN MARKER
  - 446 = WOOD PERCENT SIGN MARKER
  - 447 = BRASS PERCENT SIGN MARKER
  - 448 = IRON PERCENT SIGN MARKER
  - 449 = CEMENT PERCENT SIGN MARKER
  - 450 = CONCRETE PERCENT SIGN MARKER
  - 451 = WOOD PERCENT SIGN MARKER
  - 452 = BRASS PERCENT SIGN MARKER
  - 453 = IRON PERCENT SIGN MARKER
  - 454 = CEMENT PERCENT SIGN MARKER
  - 455 = CONCRETE PERCENT SIGN MARKER
  - 456 = WOOD PERCENT SIGN MARKER
  - 457 = BRASS PERCENT SIGN MARKER
  - 458 = IRON PERCENT SIGN MARKER
  - 459 = CEMENT PERCENT SIGN MARKER
  - 460 = CONCRETE PERCENT SIGN MARKER
  - 461 = WOOD PERCENT SIGN MARKER
  - 462 = BRASS PERCENT SIGN MARKER
  - 463 = IRON PERCENT SIGN MARKER
  - 464 = CEMENT PERCENT SIGN MARKER
  - 465 = CONCRETE PERCENT SIGN MARKER
  - 466 = WOOD PERCENT SIGN MARKER
  - 467 = BRASS PERCENT SIGN MARKER
  - 468 = IRON PERCENT SIGN MARKER
  - 469 = CEMENT PERCENT SIGN MARKER
  - 470 = CONCRETE PERCENT SIGN MARKER
  - 471 = WOOD PERCENT SIGN MARKER
  - 472 = BRASS PERCENT SIGN MARKER
  - 473 = IRON PERCENT SIGN MARKER
  - 474 = CEMENT PERCENT SIGN MARKER
  - 475 = CONCRETE PERCENT SIGN MARKER
  - 476 = WOOD PERCENT SIGN MARKER
  - 477 = BRASS PERCENT SIGN MARKER
  - 478 = IRON PERCENT SIGN MARKER
  - 479 = CEMENT PERCENT SIGN MARKER
  - 480 = CONCRETE PERCENT SIGN MARKER
  - 481 = WOOD PERCENT SIGN MARKER
  - 482 = BRASS PERCENT SIGN MARKER
  - 483 = IRON PERCENT SIGN MARKER
  - 484 = CEMENT PERCENT SIGN MARKER
  - 485 = CONCRETE PERCENT SIGN MARKER
  - 486 = WOOD PERCENT SIGN MARKER
  - 487 = BRASS PERCENT SIGN MARKER
  - 488 = IRON PERCENT SIGN MARKER
  - 489 = CEMENT PERCENT SIGN MARKER
  - 490 = CONCRETE PERCENT SIGN MARKER
  - 491 = WOOD PERCENT SIGN MARKER
  - 492 = BRASS PERCENT SIGN MARKER
  - 493 = IRON PERCENT SIGN MARKER
  - 494 = CEMENT PERCENT SIGN MARKER
  - 495 = CONCRETE PERCENT SIGN MARKER
  - 496 = WOOD PERCENT SIGN MARKER
  - 497 = BRASS PERCENT SIGN MARKER
  - 498 = IRON PERCENT SIGN MARKER
  - 499 = CEMENT PERCENT SIGN MARKER
  - 500 = CONCRETE PERCENT SIGN MARKER

S.E. 1/4 OF SEC. 21  
TWP. 46 S., RGE. 26 E.

SEE SHEET 6 OF 7 FOR  
BOUNDARY PARCELS, ENCLOSURES

S.W. 1/4 OF SEC. 22  
TWP. 46 S., RGE. 26 E.

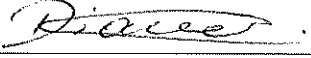
S.W. 1/4 OF SEC. 22  
TWP. 46 S., RGE. 26 E.

| <p>DATE: 02/01/2017<br/>PROJECT NO.: 2017000000<br/>FIELD NO.: 21-46-26<br/>SCALE: AS SHOWN</p> | <p>REVISIONS<br/>DESCRIPTION</p> <table border="1" style="width: 100%; border-collapse: collapse;"> <tr> <th>NO.</th> <th>DATE</th> <th>DESCRIPTION</th> </tr> <tr> <td> </td> <td> </td> <td> </td> </tr> <tr> <td> </td> <td> </td> <td> </td> </tr> <tr> <td> </td> <td> </td> <td> </td> </tr> </table> | NO.         | DATE | DESCRIPTION |  |  |  |  |  |  |  |  |  | <p>"CORKSCREW SHORES<br/>RIGHT-OF-WAY PARCELS 321,<br/>322A, 322B, 323, 324, 325 AND 326"</p> <p>SECTION 21, TOWNSHIP 46 SOUTH, RANGE 26 EAST<br/>VILLAGE OF ESTERO, LEE COUNTY, FLORIDA</p> | <p>BOUNDARY SURVEY</p> | <p><b>JOHNSON</b><br/>ENGINEERING</p> <p>2700 W. GULF BLVD., SUITE 100<br/>FORT MYERS, FLORIDA 33901<br/>TEL: 888-686-7662<br/>FL REG. NO. 12500<br/>CA REG. NO. 12500</p> |
|---|---|-------------|------|-------------|--|--|--|--|--|--|--|--|--|--|------------------------|--|
| NO.   | DATE  | DESCRIPTION |      |             |  |  |  |  |  |  |  |  |  |  |                        |  |
|   |   |             |      |             |  |  |  |  |  |  |  |  |  |  |                        |  |
|   |   |             |      |             |  |  |  |  |  |  |  |  |  |  |                        |  |
|   |   |             |      |             |  |  |  |  |  |  |  |  |  |  |                        |  |
| <p>BOUNDARY DETAIL</p> <p>DRAWN BY: J. W. HARRIS</p> <p>CHECK NUMBER: 7 OF 7</p>                |   |             |      |             |  |  |  |  |  |  |  |  |  |  |                        |  |

Memorandum  
from the  
**Department of County Lands**

Date: August 21, 2024

To: Minutes Department  
Lee County Clerk of Court

From:   
Diana Escandon  
Administrative Specialist, Senior

**SUBJECT:** BoCC Date: April 2, 2024, Item #C8

Enclosed please find the following items:

- Copy of Owner's Title Policy
- Copy of Recorded Warranty Deed
- Copy of Recorded Temporary Construction Agreement
- Copy of Purchase Agreement
- Copy of Closing Statement
- Copy of Agenda Items Report: April 2, 2024, Item #C8
- Copy of Recorded Easement
- Other: Copy of Recorded Subordination of Utility Interests

These documents are now the permanent records of the Clerk's Minutes Department.

Enclosures as stated.

The attached document has been approved by the Board of County Commissioners. Please review the instructions below and forward to the appropriate office when complete.

|                           |  |
|---------------------------|--|
| <b>Meeting Date:</b>      | 04/02/2024   |
| <b>Agenda Item #:</b>     | C8   |
| <b>Agenda Item Title:</b> | Approve Subordination of Utility Interests for Corkscrew Road Phase II Widening                            |
|                           | (1) Subordination of Utility Interests and Agreement for Reimbursement for Additional Facility Relocations |

| Department              | Instructions  |
|-------------------------|---|
| <b>County Attorney</b>  | Please review the attached document(s) at the <b>BLUE</b> sticker. If you have any questions concerning the document(s), contact the originating department.<br><br>After completion, forward to the <b>CHAIR/VICE CHAIR</b> for signature. |
| <b>Chair/Vice Chair</b> | Sign the attached document(s) at the <b>RED</b> sticker.<br><br>After completion, forward to the <b>MINUTES OFFICE</b> for execution.   |
| <b>Minutes Office</b>   | Execute the attached document(s).<br><br>After document(s) are completely executed, return the remaining originals to <b>Laurel Chick, County Administration</b> for distribution.  |

Date out from Administration: 04/02/24

Return to Dept.  Novus

RECEIVED  
MINUTES OFFICE  
2024 APR -5 PM 1:28

2024 APR -2 AM 11:05  
RECEIVED BY  
LEE CO. ATTORNEY

**AGENDA ITEM REPORT**

**DATE:** April 2, 2024  
**DEPARTMENT:** County Lands  
**REQUESTER:** Robert Clemens  
**TITLE:** Approve Subordination of Utility Interests for Corkscrew Road Phase II Widening

**I. MOTION REQUESTED**

- A) Approve the Subordination of Utility Interests and Agreement for Reimbursement for Additional Facility Relocations between Lee County and Florida Power & Light Company (FPL) for utility interests being affected by the Corkscrew Road Phase II Widening, Project No. 0669;
- B) Authorize the Chair on behalf of the Board to execute the Agreement and approve payment of relocation fees from the project budget estimated to cost \$81,051;
- C) Authorize payment of recording fees, estimated to be \$125; and
- D) Authorize County Lands to handle and accept all documentation necessary to complete the transaction.

**II. ITEM SUMMARY**

Grants Lee County the necessary subordinated property rights from Florida Power & Light Company (FPL) to construct that portion of Corkscrew Road encumbered by existing FPL easement interests and provides for reimbursement to FPL for its utility relocation costs, estimated at \$81,051. Recording fees are estimated to be \$125. Construction commenced in the first quarter of 2024.

**III. BACKGROUND AND IMPLICATIONS OF ACTION**

A) Board Action and Other History

On February 19, 2019, under Administrative Agenda Item 20, the Board awarded a contract to Johnson Engineering, Inc. to update and set the final alignment and prepare the roadway plans and permits for Corkscrew Road from Ben Hill Griffin Parkway to Alico Road.

On January 18, 2022, in accordance with Administrative Agenda Item 3, the Board approved and adopted the Corkscrew Road Phase II Widening Analysis that evaluated the improvements to the project.

On December 5, 2023, in accordance with Administrative Agenda Item 5, the Board awarded the construction contract for Corkscrew Road Phase II.

B) Policy Issues

C) BoCC Goals

Transportation

D) Analysis

The Corkscrew Road Phase II widening project extends from Bella Terra Boulevard to Alico Road. Lee County previously acquired right-of-way from the Corkscrew Shores subdivision for the expansion of the roadway improvements. Certain portions of the right-of-way were encumbered by utility easements with FPL facilities. This subordination from FPL grants Lee County the right to construct within the portions of the newly acquired right-of-way that are encumbered by existing FPL easement interests and provides for reimbursement of their utility relocation costs.  
 Estimated recording fees: \$125.

E) Options

**IV. FINANCIAL INFORMATION**

|    |   |               |
|----|---|---------------|
| A) | Current year dollar amount of item:   | \$81,176      |
| B) | Is this item approved in the current budget?  | Yes           |
| C) | Is this a revenue or expense item?  | Expense       |
| D) | Is this Discretionary or Mandatory?   | Discretionary |
| E) | Will this item impact future budgets?<br>If yes, please include reasons in III(D) above.  | Yes           |
| F) | Fund: Transportation Capital Improvements<br>Program: Capital Projects<br>Project: Corkscrew Road<br>Account Strings: 20066930700 |               |

|    |            |  |
|----|------------|--|
| G) | Fund Type? | Other: Transportation Capital Projects |
| H) | Comments:  |  |

**V. RECOMMENDATION**

Approve

**VI. TIMING/IMPLEMENTATION**

**VII. FOLLOW UP**

**ATTACHMENTS:**

| Description  | Upload Date | Type      |
|--|-------------|-----------|
| <a href="#">Subordination of Utility Interests and Agreement for Reimbursement for Additional Facility Relocations</a> | 3/12/2024   | Agreement |
| <a href="#">Location Maps</a>  | 3/12/2024   | Agreement |
| <a href="#">040224R-C-8-Utility Reimbursement Agreement</a>  | 4/9/2024    | Agreement |

**REVIEWERS:**

| Department      | Reviewer         | Action   | Date                 |
|-----------------|------------------|----------|----------------------|
| County Lands    | Clemens, Robert  | Approved | 3/20/2024 - 9:53 AM  |
| County Lands    | Cerchie, Randy   | Approved | 3/22/2024 - 10:44 AM |
| Budget Services | Guttery, Angela  | Approved | 3/22/2024 - 11:30 AM |
| Budget Services | Winton, Peter    | Approved | 3/22/2024 - 1:19 PM  |
| County Attorney | Halverson, David | Approved | 3/26/2024 - 9:33 AM  |
| County Manager  | Mora, Marc       | Approved | 3/26/2024 - 1:36 PM  |