

This instrument prepared by:

Department of County Lands  
P.O. Box 398  
Fort Myers, FL 33902-0398

**SUBORDINATION OF UTILITY INTERESTS  
AND AGREEMENT FOR  
REIMBURSEMENT FOR ADDITIONAL FACILITY RELOCATIONS**

THIS AGREEMENT, entered into this \_\_\_\_\_ day of \_\_\_\_\_, 202\_\_\_\_, by and between LEE COUNTY, a political subdivision of the State of Florida, whose mailing address is P.O. Box 398, Fort Myers, Florida 33902-0398, hereinafter called the "County", and FLORIDA POWER & LIGHT COMPANY, a Florida Corporation, whose mailing address is P. O. Box 14000, Juno Beach, Florida 33408, hereinafter called "Utility".

**W I T N E S E T H:**

WHEREAS, the Utility presently has an interest in certain land that have been determined necessary for highway purposes; and

WHEREAS, the proposed use of these lands for highway purposes will require subordination of the interest claimed in such lands by Utility to the County; and

WHEREAS, the County is willing to pay for any initial relocation of the Utility's facilities within the **Utility's Public right-of-way/Easements** to prevent conflict between the County's use and the Utility's use, and for the benefit of each; and

WHEREAS the County, in addition, in recognition of the Utility's interest in the certain lands, is willing to pay for any future relocation of the Utility's facilities from or within the entire width of the **Utility's Public right-of-way/Easements** shown on Exhibit "A", attached hereto and made a part hereof.

NOW, THEREFORE, in consideration of the mutual covenants and promises of the parties hereto, Utility and County agree as follows:

UTILITY subordinates any and all of its interest in its easement lands illustrated on "**EXHIBIT A**" attached hereto and made a part hereof, to the interest of the County, or its successors, for the purpose of constructing, improving, maintaining and operating a road and appurtenant infrastructure, drainage and public utilities, over, under, through, upon, and/or across such Lands, based on the following:

Nature of Encumbrance	Date	From	In Favor of	Recorded Instrument
<i>Public Utility Easements</i>	<i>3/14/14</i>	<i>Plat</i>	<i>Public/Private Utilities</i>	<i>No. 2014000052328</i>

The County and the Utility further agree that:

1. "**Utility's Public right-of-way/Easements**", as used herein, shall mean that area which is shown in Exhibit "A" and which includes the Utility's easements identified above and additional lands for public utility right-of-way, as shown in Exhibit "A", attached hereto and made a part hereof.
2. The Utility shall have the right to construct, operate, maintain, improve, add to, upgrade, remove, and relocate facilities on, within, and upon the **Utility's Public right-of-way/Easements** shown in Exhibit "A", in accordance with the County's current minimum standards for such facilities as of the date of this Agreement. Any new construction or relocation of facilities within the **Utility's Public right-of-way/Easements** will be subject to prior approval by the County.
3. The County shall pay for any relocation of existing facilities. In addition, the Utility retains the right to be reimbursed, either now or in the future, for additional relocation or adjustment of its facilities located presently or to be located on the **Utility's Public right-of-way/Easements** shown in Exhibit "A", if such relocation or adjustment is caused by present or future uses of the **Utility's Public right-of-way/Easements** by County, or its assigns, including, but not limited to, the cost of acquiring replacement easements.
4. The Utility shall have the right to enter upon the lands shown in Exhibit "A" for the purposes outlined in Paragraph 2 above, including the right to trim such trees, brush, and growth which might endanger or interfere with such facilities. County shall provide and ensure access to said lands by the Utility.

- 5. The Utility agrees to repair any damage to County facilities and to indemnify the County against any loss or damage resulting from the Utility exercising its rights to construct, operate, maintain, improve, add to, upgrade or remove its facilities on the said Utility's **Public right-of-way/Easements**.
- 6. This Agreement shall not be assigned by County except to the State of Florida.

IN WITNESS WHEREOF, the parties hereto have executed this Agreement on the day and year first above written.

Approved and accepted for and on behalf of Lee County, Florida, this \_\_\_\_ day of \_\_\_\_\_, 202\_\_.

ATTEST:  
 KEVIN C. KARNES  
 CLERK OF CIRCUIT COURT

BOARD OF COUNTY COMMISSIONERS  
 OF LEE COUNTY, FLORIDA

BY: \_\_\_\_\_  
 Deputy Clerk

BY: \_\_\_\_\_  
 MIKE GREENWELL, CHAIR

APPROVED AS TO FORM FOR THE  
 RELIANCE OF LEE COUNTY ONLY

BY: \_\_\_\_\_  
 County Attorney's Office

---

(Execution and Acknowledgement continued on next page)

IN WITNESS WHEREOF, the parties hereto have executed this Agreement on the day and year first above written.

Signed, sealed and delivered  
in the presence of:

FLORIDA POWER & LIGHT COMPANY

By: [Signature]

By: [Signature]

Print Name: Matthew C. Jenkins

Title: Corporate Real Estate Manager  
Print Name:

By: [Signature]

Print Name: Celline Williams

(Corp. Seal)

STATE OF FLORIDA, COUNTY OF Charlotte

I hereby certify that the foregoing instrument was acknowledged before me by means of  physical presence or  online notarization, this 1<sup>st</sup> day of March, 2024, by Cameron Crenshaw to me known and personally known to me to be the person described in, and did not take an oath and who executed the foregoing instrument as its Corporate Real Estate Manager of the Florida Power & Light Company and acknowledged before me that he executed the same as such official in the name and on behalf of said Corporation.

WITNESS my hand and official seal in the County and State aforesaid this 1<sup>st</sup> day of March, 2024.

My Commission Expires: 02-13-27

Notary Signature: [Signature]  
Notary Public State of Florida

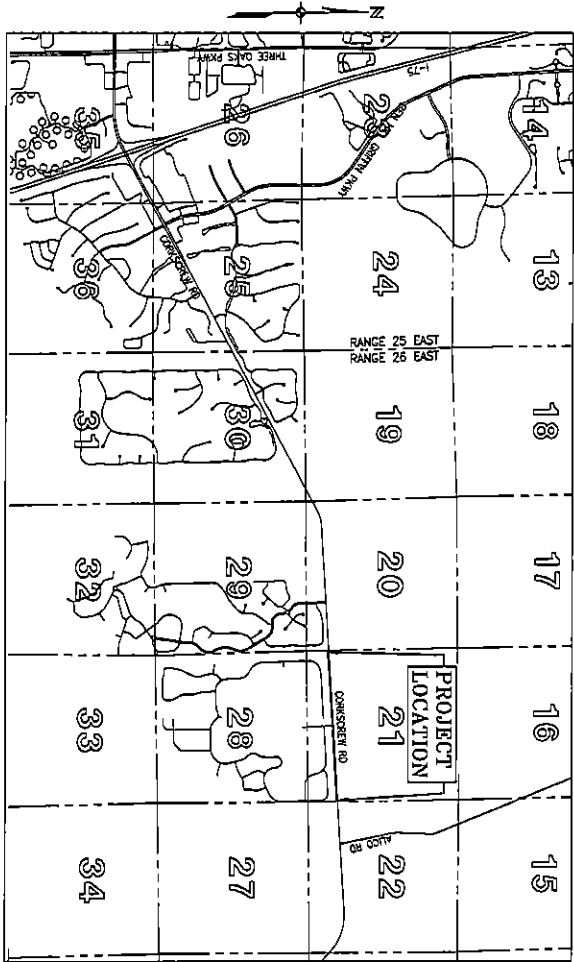
Printed Name: Celline Williams



# BOUNDARY SURVEY

FOR

## "CORKSCREW SHORES RIGHT-OF-WAY PARCELS 321, 322A, 322B, 323, 324, 325 AND 326" SECTION 21, TOWNSHIP 46 SOUTH, RANGE 26 EAST VILLAGE OF ESTERO, LEE COUNTY, FLORIDA



VERTICAL SCALE  
1"=500'

0 1000 2000 4000  
HORIZONTAL SCALE 1"=2000'  
(INTEGRATED DISPLAY SCALE 1"=2000')

**NOTES:**

1. THE ACCURACY OF THE DEEDS, PLATS, RECORDS AND RECORDS REFERRED TO HEREIN IS NOT GUARANTEED BY THE SURVEYOR.
2. DOCUMENTS AND INFORMATION, DATA, SKETCH, RECORD, MAP, OR RECORD, WHICH ARE FILED AND ARE PUBLIC RECORDS IN THE PUBLIC RECORDS OF THE STATE OF FLORIDA, HAVE BEEN REFERRED TO AND QUOTED IN THIS SURVEY.
3. EASEMENTS SHOWN HEREON ARE BASED ON THE DEEDS, PLATS, RECORDS AND RECORDS REFERRED TO HEREIN.
4. EASEMENTS SHOWN HEREON ARE BASED ON THE DEEDS, PLATS, RECORDS AND RECORDS REFERRED TO HEREIN.
5. THE EASEMENTS OR RIGHTS OF WAY FOR CORKSCREW SHORES ARE NOT INCLUDED HEREON AT THE REQUEST OF THE CLIENT.
6. UNDERGROUND UTILITIES AND/OR ENCROACHMENTS WERE NOT LOCATED AS A PART OF THIS SURVEY.
7. THIS SURVEY WAS CONDUCTED IN ACCORDANCE WITH THE PROFESSIONAL STANDARDS AND ETHICS OF THE SURVEYING PROFESSION.
8. NO IMPROVEMENTS, ENCROACHMENTS OR ADJUTS ARE SHOWN ON THE SURVEYED PARCELS AT THE TIME THE SURVEY WAS PERFORMED. THE SURVEYOR HAS ADVISED THE CLIENT THAT ANY SUCH ENCROACHMENTS OR IMPROVEMENTS ARE NOT SHOWN AND ARE NOT TO BE CONSIDERED AS A PART OF THIS SURVEY.
9. THIS SURVEY DOES NOT ESTABLISH PROPERTY OWNERSHIP OR PROPERTY RIGHTS. THIS SURVEY LOCATED THE BOUNDARY IN ACCORDANCE WITH AND IN RELATION TO THE DEEDS, PLATS, RECORDS AND RECORDS REFERRED TO HEREIN.
10. ADJUSTMENTS OR DEFLECTIONS TO THIS SURVEY MAP OR REPORT BY OTHER THAN THE SURVEY PARTY IS PROHIBITED WITHOUT THE WRITTEN CONSENT OF THE SURVEY PARTY.
11. THIS SURVEY IS SUBJECT TO ANY FACTS THAT MAY BE DEVELOPED BY A TITLE AND ACCURATE TITLE SEARCH. A TITLE SEARCH AND/OR ABSTRACT OF THE MAP WAS PROVIDED TO THE CLIENT.

SEE SHEET E OF F FOR  
BOUNDARY PARCEL DESCRIPTIONS

Mark D. Helms  
P.S.M. 55312  
State of Florida  
Professional Seal 15137  
Date of Issue 04/11/2012

THIS SURVEY IS ONLY FOR THE BOUNDARY OF THE PARCELS SHOWN HEREON AND IS NOT TO BE USED FOR ANY OTHER PURPOSES. THE SURVEYOR HAS ADVISED THE CLIENT THAT ANY SUCH ENCROACHMENTS OR IMPROVEMENTS ARE NOT SHOWN AND ARE NOT TO BE CONSIDERED AS A PART OF THIS SURVEY.

**REVISIONS**

DATE	DESCRIPTION
05/10/22	REVISION #1 - CORRECTED PARCEL 21 AREA
05/10/22	REVISION #2 - CORRECTED PARCEL 21 AREA
05/10/22	REVISION #3 - CORRECTED PARCEL 21 AREA
05/10/22	REVISION #4 - CORRECTED PARCEL 21 AREA
05/10/22	REVISION #5 - CORRECTED PARCEL 21 AREA
05/10/22	REVISION #6 - CORRECTED PARCEL 21 AREA

COVER SHEET

1 OF 7

"CORKSCREW SHORES  
RIGHT-OF-WAY PARCELS 321,  
322A, 322B, 323, 324, 325 AND 326"  
SECTION 21, TOWNSHIP 46 SOUTH, RANGE 26 EAST  
VILLAGE OF ESTERO, LEE COUNTY, FLORIDA

BOUNDARY SURVEY

**JOHNSON**  
ENGINEERING  
INCORPORATED  
11111 N. WINDY HILL BLVD  
SUITE 200  
FORT MYERS, FL 33907  
TEL: 941.336.1111  
WWW.JOHNSONENGINEERING.COM

PARCEL 381 - SEE SHEET 3

DESCRIPTION - PARCEL 381 - SEE SHEET 3
SECTION 21, TOWNSHIP 28 N, RANGE 28 E, LEE COUNTY, FLORIDA
A PORTION OF TRACT A, CONGRESS SPURS, AS DESCRIBED IN OFFICIAL RECORDS...

PARCEL 382 - SEE SHEET 3

DESCRIPTION - PARCEL 382 - SEE SHEET 3
SECTION 21, TOWNSHIP 28 N, RANGE 28 E, LEE COUNTY, FLORIDA
A PORTION OF TRACT A, CONGRESS SPURS, AS DESCRIBED IN OFFICIAL RECORDS...

PARCEL 383 - SEE SHEETS 4, 6 & 8

DESCRIPTION - PARCEL 383 - SEE SHEETS 4, 6 & 8
SECTION 21, TOWNSHIP 28 N, RANGE 28 E, LEE COUNTY, FLORIDA
A PORTION OF TRACT A, CONGRESS SPURS, AS DESCRIBED IN OFFICIAL RECORDS...

PARCEL 384 - SEE SHEETS 5 & 6

DESCRIPTION - PARCEL 384 - SEE SHEETS 5 & 6
SECTION 21, TOWNSHIP 28 N, RANGE 28 E, LEE COUNTY, FLORIDA
A PORTION OF TRACT A, CONGRESS SPURS, AS DESCRIBED IN OFFICIAL RECORDS...

PARCEL 385 - SEE SHEETS 5 & 6

DESCRIPTION - PARCEL 385 - SEE SHEETS 5 & 6
SECTION 21, TOWNSHIP 28 N, RANGE 28 E, LEE COUNTY, FLORIDA
A PORTION OF TRACT A, CONGRESS SPURS, AS DESCRIBED IN OFFICIAL RECORDS...

PARCEL 386 - SEE SHEETS 5 & 6

DESCRIPTION - PARCEL 386 - SEE SHEETS 5 & 6
SECTION 21, TOWNSHIP 28 N, RANGE 28 E, LEE COUNTY, FLORIDA
A PORTION OF TRACT A, CONGRESS SPURS, AS DESCRIBED IN OFFICIAL RECORDS...

PARCEL 387 - SEE SHEETS 5 & 6

DESCRIPTION - PARCEL 387 - SEE SHEETS 5 & 6
SECTION 21, TOWNSHIP 28 N, RANGE 28 E, LEE COUNTY, FLORIDA
A PORTION OF TRACT A, CONGRESS SPURS, AS DESCRIBED IN OFFICIAL RECORDS...

PARCEL 388 - SEE SHEETS 5 & 6

DESCRIPTION - PARCEL 388 - SEE SHEETS 5 & 6
SECTION 21, TOWNSHIP 28 N, RANGE 28 E, LEE COUNTY, FLORIDA
A PORTION OF TRACT A, CONGRESS SPURS, AS DESCRIBED IN OFFICIAL RECORDS...

PARCEL 389 - SEE SHEET 5

DESCRIPTION - PARCEL 389 - SEE SHEET 5
SECTION 21, TOWNSHIP 28 N, RANGE 28 E, LEE COUNTY, FLORIDA
A PORTION OF TRACT A, CONGRESS SPURS, AS DESCRIBED IN OFFICIAL RECORDS...

PARCEL 390 - SEE SHEET 5

DESCRIPTION - PARCEL 390 - SEE SHEET 5
SECTION 21, TOWNSHIP 28 N, RANGE 28 E, LEE COUNTY, FLORIDA
A PORTION OF TRACT A, CONGRESS SPURS, AS DESCRIBED IN OFFICIAL RECORDS...

PARCEL 391 - SEE SHEET 5

DESCRIPTION - PARCEL 391 - SEE SHEET 5
SECTION 21, TOWNSHIP 28 N, RANGE 28 E, LEE COUNTY, FLORIDA
A PORTION OF TRACT A, CONGRESS SPURS, AS DESCRIBED IN OFFICIAL RECORDS...

PARCEL 392 - SEE SHEET 5

DESCRIPTION - PARCEL 392 - SEE SHEET 5
SECTION 21, TOWNSHIP 28 N, RANGE 28 E, LEE COUNTY, FLORIDA
A PORTION OF TRACT A, CONGRESS SPURS, AS DESCRIBED IN OFFICIAL RECORDS...

PARCEL 393 - SEE SHEET 5

DESCRIPTION - PARCEL 393 - SEE SHEET 5
SECTION 21, TOWNSHIP 28 N, RANGE 28 E, LEE COUNTY, FLORIDA
A PORTION OF TRACT A, CONGRESS SPURS, AS DESCRIBED IN OFFICIAL RECORDS...

PARCEL 394 - SEE SHEET 5

DESCRIPTION - PARCEL 394 - SEE SHEET 5
SECTION 21, TOWNSHIP 28 N, RANGE 28 E, LEE COUNTY, FLORIDA
A PORTION OF TRACT A, CONGRESS SPURS, AS DESCRIBED IN OFFICIAL RECORDS...

PARCEL 395 - SEE SHEET 5

DESCRIPTION - PARCEL 395 - SEE SHEET 5
SECTION 21, TOWNSHIP 28 N, RANGE 28 E, LEE COUNTY, FLORIDA
A PORTION OF TRACT A, CONGRESS SPURS, AS DESCRIBED IN OFFICIAL RECORDS...

PARCEL 396 - SEE SHEET 5

DESCRIPTION - PARCEL 396 - SEE SHEET 5
SECTION 21, TOWNSHIP 28 N, RANGE 28 E, LEE COUNTY, FLORIDA
A PORTION OF TRACT A, CONGRESS SPURS, AS DESCRIBED IN OFFICIAL RECORDS...

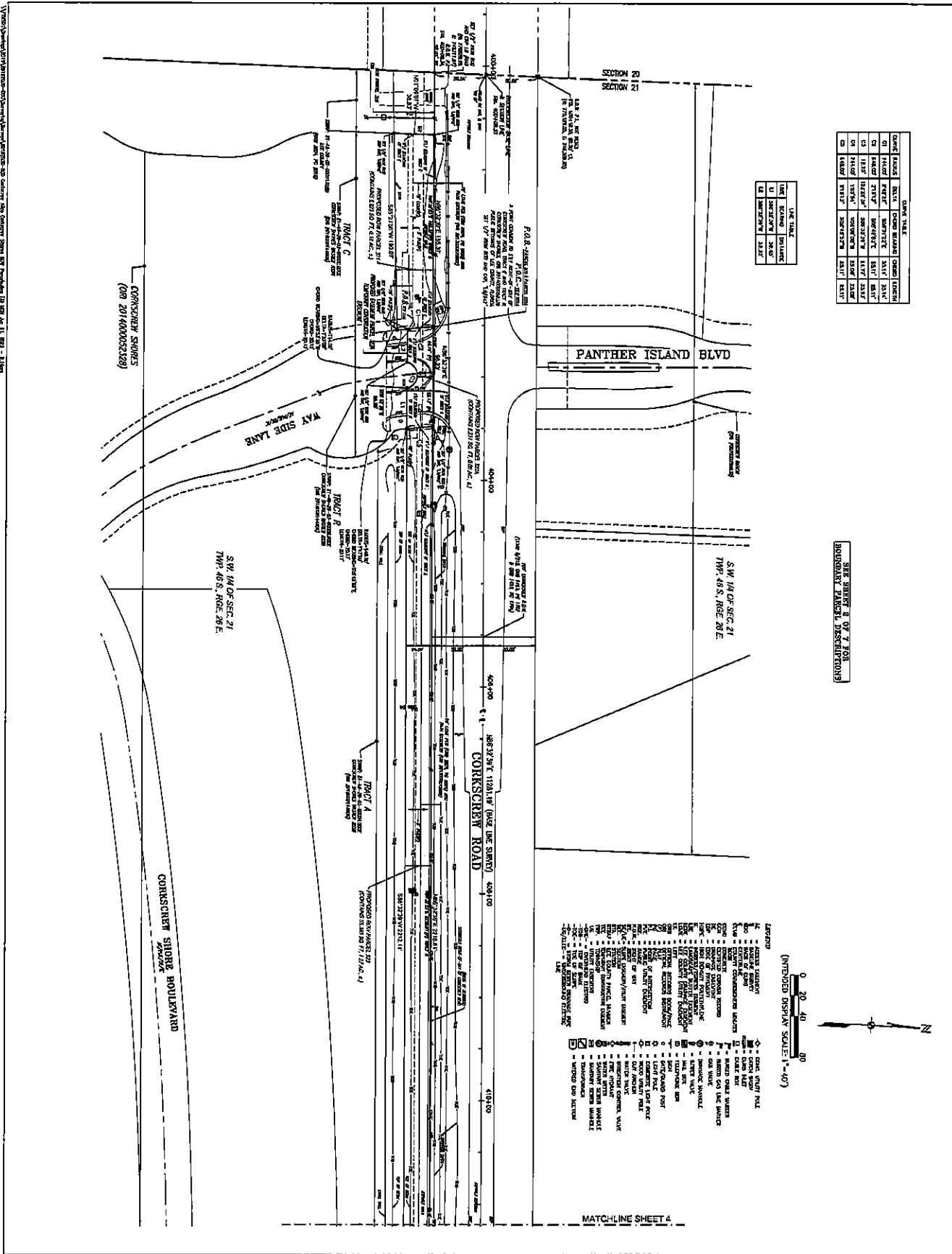
REVISIONS

Table with columns: DATE, DESCRIPTION, DRAWN BY, CHECKED BY, SCALE, SHEET NUMBER

BOUNDARY SURVEY

"CORKSCREW SHORES RIGHT-OF-WAY PARCELS 321, 322A, 322B, 323, 324, 325 AND 326" SECTION 21, TOWNSHIP 28 SOUTH, RANGE 28 EAST VILLAGE OF ESTERO, LEE COUNTY, FLORIDA

PARCEL DESCRIPTIONS SHEET NUMBER 2 OF 7



DATE TAPE

DATE	TAPE	DESCRIPTION
05/20/03	1	TRACT A
05/20/03	2	TRACT B
05/20/03	3	TRACT C
05/20/03	4	TRACT D
05/20/03	5	TRACT E
05/20/03	6	TRACT F
05/20/03	7	TRACT G
05/20/03	8	TRACT H
05/20/03	9	TRACT I
05/20/03	10	TRACT J
05/20/03	11	TRACT K
05/20/03	12	TRACT L

LINE TYPE

---	ADJACENT	BORDER
-.-.-	RETRACTED	BORDER
-.-.-	RETRACTED	LINE
-.-.-	RETRACTED	LINE

SEE SHEET 4 OF 7 FOR BOUNDARY PARCEL DESCRIPTIONS

LEGEND

(INTENDED DISPLAY SCALE: 1"=40')

- ADJACENT BOUNDARY
- .-.- RETRACTED BOUNDARY
- .-.- RETRACTED BOUNDARY LINE
- ADJACENT PROPERTY LINE
- .-.- RETRACTED PROPERTY LINE
- ADJACENT LOT LINE
- .-.- RETRACTED LOT LINE
- ADJACENT CORNER
- .-.- RETRACTED CORNER
- ADJACENT MOUND
- .-.- RETRACTED MOUND
- ADJACENT TOWER
- .-.- RETRACTED TOWER
- ADJACENT WALKWAY
- .-.- RETRACTED WALKWAY
- ADJACENT DRIVEWAY
- .-.- RETRACTED DRIVEWAY
- ADJACENT DRIVE
- .-.- RETRACTED DRIVE
- ADJACENT ROAD
- .-.- RETRACTED ROAD
- ADJACENT RAILROAD
- .-.- RETRACTED RAILROAD
- ADJACENT CANAL
- .-.- RETRACTED CANAL
- ADJACENT STREAM
- .-.- RETRACTED STREAM
- ADJACENT WATERWAY
- .-.- RETRACTED WATERWAY
- ADJACENT LAKE
- .-.- RETRACTED LAKE
- ADJACENT MARSH
- .-.- RETRACTED MARSH
- ADJACENT SWAMP
- .-.- RETRACTED SWAMP
- ADJACENT MOUNTAIN
- .-.- RETRACTED MOUNTAIN
- ADJACENT HILL
- .-.- RETRACTED HILL
- ADJACENT VALLEY
- .-.- RETRACTED VALLEY
- ADJACENT CANYON
- .-.- RETRACTED CANYON
- ADJACENT CREEK
- .-.- RETRACTED CREEK
- ADJACENT RIVER
- .-.- RETRACTED RIVER
- ADJACENT OCEAN
- .-.- RETRACTED OCEAN
- ADJACENT BAY
- .-.- RETRACTED BAY
- ADJACENT SOUND
- .-.- RETRACTED SOUND
- ADJACENT GULF
- .-.- RETRACTED GULF
- ADJACENT STRAIT
- .-.- RETRACTED STRAIT
- ADJACENT ISTHMIAN
- .-.- RETRACTED ISTHMIAN
- ADJACENT PENINSULAR
- .-.- RETRACTED PENINSULAR
- ADJACENT TROPICAL
- .-.- RETRACTED TROPICAL
- ADJACENT SUBTROPICAL
- .-.- RETRACTED SUBTROPICAL
- ADJACENT TEMPERATE
- .-.- RETRACTED TEMPERATE
- ADJACENT CONTINENTAL
- .-.- RETRACTED CONTINENTAL
- ADJACENT POLAR
- .-.- RETRACTED POLAR
- ADJACENT TUNDRA
- .-.- RETRACTED TUNDRA
- ADJACENT SAVANNAH
- .-.- RETRACTED SAVANNAH
- ADJACENT STEPPES
- .-.- RETRACTED STEPPES
- ADJACENT PRERIE
- .-.- RETRACTED PRERIE
- ADJACENT PRAIRIE
- .-.- RETRACTED PRAIRIE
- ADJACENT MEADOW
- .-.- RETRACTED MEADOW
- ADJACENT FELD
- .-.- RETRACTED FELD
- ADJACENT PASTURE
- .-.- RETRACTED PASTURE
- ADJACENT RANCH
- .-.- RETRACTED RANCH
- ADJACENT FARM
- .-.- RETRACTED FARM
- ADJACENT ESTATE
- .-.- RETRACTED ESTATE
- ADJACENT TRACT
- .-.- RETRACTED TRACT
- ADJACENT LOTS
- .-.- RETRACTED LOTS
- ADJACENT UNITS
- .-.- RETRACTED UNITS
- ADJACENT HOMES
- .-.- RETRACTED HOMES
- ADJACENT CONDOS
- .-.- RETRACTED CONDOS
- ADJACENT APARTMENTS
- .-.- RETRACTED APARTMENTS
- ADJACENT TOWNHOMES
- .-.- RETRACTED TOWNHOMES
- ADJACENT VILLAGES
- .-.- RETRACTED VILLAGES
- ADJACENT COMPLEXES
- .-.- RETRACTED COMPLEXES
- ADJACENT RESORTS
- .-.- RETRACTED RESORTS
- ADJACENT HOTELS
- .-.- RETRACTED HOTELS
- ADJACENT INNS
- .-.- RETRACTED INNS
- ADJACENT MANSIONS
- .-.- RETRACTED MANSIONS
- ADJACENT CASTLES
- .-.- RETRACTED CASTLES
- ADJACENT PALACES
- .-.- RETRACTED PALACES
- ADJACENT CHATEAUX
- .-.- RETRACTED CHATEAUX
- ADJACENT MANOR HOUSES
- .-.- RETRACTED MANOR HOUSES
- ADJACENT GREAT HOUSES
- .-.- RETRACTED GREAT HOUSES
- ADJACENT ESTATE HOMES
- .-.- RETRACTED ESTATE HOMES
- ADJACENT COUNTRY HOMES
- .-.- RETRACTED COUNTRY HOMES
- ADJACENT RUSTIC HOMES
- .-.- RETRACTED RUSTIC HOMES
- ADJACENT TRADITIONAL HOMES
- .-.- RETRACTED TRADITIONAL HOMES
- ADJACENT MODERN HOMES
- .-.- RETRACTED MODERN HOMES
- ADJACENT CONTEMPORARY HOMES
- .-.- RETRACTED CONTEMPORARY HOMES
- ADJACENT POST-WAR HOMES
- .-.- RETRACTED POST-WAR HOMES
- ADJACENT PRE-WAR HOMES
- .-.- RETRACTED PRE-WAR HOMES
- ADJACENT COLONIAL HOMES
- .-.- RETRACTED COLONIAL HOMES
- ADJACENT VICTORIAN HOMES
- .-.- RETRACTED VICTORIAN HOMES
- ADJACENT EDWARDIAN HOMES
- .-.- RETRACTED EDWARDIAN HOMES
- ADJACENT GEORGIAN HOMES
- .-.- RETRACTED GEORGIAN HOMES
- ADJACENT FREDERICKIAN HOMES
- .-.- RETRACTED FREDERICKIAN HOMES
- ADJACENT REGENCY HOMES
- .-.- RETRACTED REGENCY HOMES
- ADJACENT RINO HOMES
- .-.- RETRACTED RINO HOMES
- ADJACENT ART DECO HOMES
- .-.- RETRACTED ART DECO HOMES
- ADJACENT MIDDLE EASTERN HOMES
- .-.- RETRACTED MIDDLE EASTERN HOMES
- ADJACENT MEDITERRANEAN HOMES
- .-.- RETRACTED MEDITERRANEAN HOMES
- ADJACENT ITALIAN HOMES
- .-.- RETRACTED ITALIAN HOMES
- ADJACENT FRENCH HOMES
- .-.- RETRACTED FRENCH HOMES
- ADJACENT SPANISH HOMES
- .-.- RETRACTED SPANISH HOMES
- ADJACENT PORTUGUESE HOMES
- .-.- RETRACTED PORTUGUESE HOMES
- ADJACENT BAHAMIAN HOMES
- .-.- RETRACTED BAHAMIAN HOMES
- ADJACENT CUBAN HOMES
- .-.- RETRACTED CUBAN HOMES
- ADJACENT JAMAICAN HOMES
- .-.- RETRACTED JAMAICAN HOMES
- ADJACENT TRINIDADIAN HOMES
- .-.- RETRACTED TRINIDADIAN HOMES
- ADJACENT TOBAGIAN HOMES
- .-.- RETRACTED TOBAGIAN HOMES
- ADJACENT HAITIAN HOMES
- .-.- RETRACTED HAITIAN HOMES
- ADJACENT DOMINICAN HOMES
- .-.- RETRACTED DOMINICAN HOMES
- ADJACENT PUERTO RICAN HOMES
- .-.- RETRACTED PUERTO RICAN HOMES
- ADJACENT VENEZUELAN HOMES
- .-.- RETRACTED VENEZUELAN HOMES
- ADJACENT ARGENTINE HOMES
- .-.- RETRACTED ARGENTINE HOMES
- ADJACENT BRAZILIAN HOMES
- .-.- RETRACTED BRAZILIAN HOMES
- ADJACENT CHILEAN HOMES
- .-.- RETRACTED CHILEAN HOMES
- ADJACENT PERUVIAN HOMES
- .-.- RETRACTED PERUVIAN HOMES
- ADJACENT COLOMBIAN HOMES
- .-.- RETRACTED COLOMBIAN HOMES
- ADJACENT VENEZUELAN HOMES
- .-.- RETRACTED VENEZUELAN HOMES
- ADJACENT CUBAN HOMES
- .-.- RETRACTED CUBAN HOMES
- ADJACENT JAMAICAN HOMES
- .-.- RETRACTED JAMAICAN HOMES
- ADJACENT TRINIDADIAN HOMES
- .-.- RETRACTED TRINIDADIAN HOMES
- ADJACENT TOBAGIAN HOMES
- .-.- RETRACTED TOBAGIAN HOMES
- ADJACENT HAITIAN HOMES
- .-.- RETRACTED HAITIAN HOMES
- ADJACENT DOMINICAN HOMES
- .-.- RETRACTED DOMINICAN HOMES
- ADJACENT PUERTO RICAN HOMES
- .-.- RETRACTED PUERTO RICAN HOMES
- ADJACENT VENEZUELAN HOMES
- .-.- RETRACTED VENEZUELAN HOMES
- ADJACENT ARGENTINE HOMES
- .-.- RETRACTED ARGENTINE HOMES
- ADJACENT BRAZILIAN HOMES
- .-.- RETRACTED BRAZILIAN HOMES
- ADJACENT CHILEAN HOMES
- .-.- RETRACTED CHILEAN HOMES
- ADJACENT PERUVIAN HOMES
- .-.- RETRACTED PERUVIAN HOMES
- ADJACENT COLOMBIAN HOMES
- .-.- RETRACTED COLOMBIAN HOMES

0 20 40 80

--- CORNER MARK

--- CORNER POST

--- CORNER SIGN

--- CORNER MARK

--- CORNER POST

--- CORNER SIGN

--- CORNER MARK

--- CORNER POST

--- CORNER SIGN

--- CORNER MARK

--- CORNER POST

--- CORNER SIGN

--- CORNER MARK

--- CORNER POST

--- CORNER SIGN

--- CORNER MARK

--- CORNER POST

--- CORNER SIGN

<b>3 OF 7</b>	BOUNDARY SURVEY	<p><b>"CORKSCREW SHORES RIGHT-OF-WAY PARCELS 321, 322A, 322B, 323, 324, 325 AND 326"</b></p> <p>SECTION 21, TOWNSHIP 48 SOUTH, RANGE 26 EAST VILLAGE OF ESTERO, LEE COUNTY, FLORIDA</p>	BOUNDARY DETAIL
	REVISIONS		
	DATE		
DATE	DESCRIPTION		
REVISION			
TOTAL	21-REVISION		
SCALE	AS SHOWN		
DRAWN BY: AS SHOWN			
CHECKED BY: AS SHOWN			
APPROVED BY: AS SHOWN			

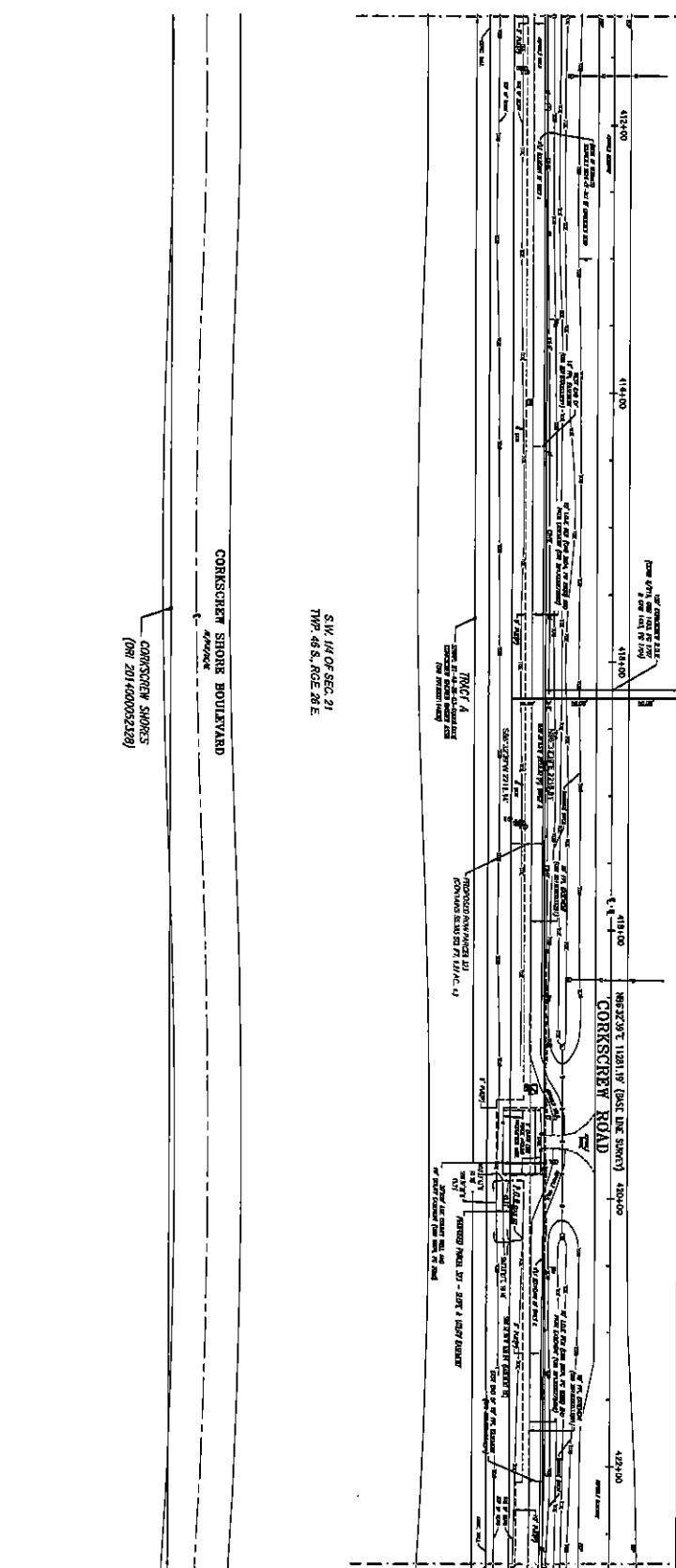
PROJECT NUMBER: **3 OF 7**

ENGINEERING

BOUNDARY SURVEY

OLINSON ENGINEERING  
1170 WOODLAND BLVD. #304  
ESTERO, FLORIDA 33429  
TEL: 888.344.5389

\Users\johanson\Documents\2014\20140925\20140925.dwg - 2014-09-25 11:01:11 AM - 11:01:11 AM

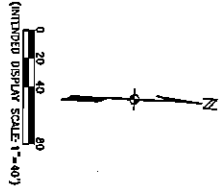


MATCHLINE SHEET 3

SEE SHEET 2 OF 7 FOR BOUNDARY PARCEL DESCRIPTIONS

S.W. 1/4 OF SEC. 21  
TWP. 46 S., RGE. 28 E.

- LEGEND**
- 12" WATER MAIN
  - 8" WATER MAIN
  - 6" WATER MAIN
  - 4" WATER MAIN
  - 2" WATER MAIN
  - 12" SEWER
  - 8" SEWER
  - 6" SEWER
  - 4" SEWER
  - 2" SEWER
  - 12" GAS
  - 8" GAS
  - 6" GAS
  - 4" GAS
  - 2" GAS
  - 12" ELECTRIC
  - 8" ELECTRIC
  - 6" ELECTRIC
  - 4" ELECTRIC
  - 2" ELECTRIC
  - 12" TELEPHONE
  - 8" TELEPHONE
  - 6" TELEPHONE
  - 4" TELEPHONE
  - 2" TELEPHONE
  - 12" CABLE TV
  - 8" CABLE TV
  - 6" CABLE TV
  - 4" CABLE TV
  - 2" CABLE TV
  - 12" FIBER OPTIC
  - 8" FIBER OPTIC
  - 6" FIBER OPTIC
  - 4" FIBER OPTIC
  - 2" FIBER OPTIC



MATCHLINE SHEET 5

4 OF 7

BOUNDARY SURVEY

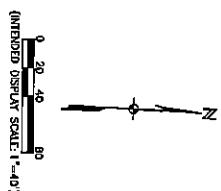
NO.	DATE	REVISIONS DESCRIPTION

**"CORKSCREW SHORES  
 RIGHT-OF-WAY PARCELS 321,  
 322A, 322B, 323, 324, 325 AND 326"**  
 SECTION 21, TOWNSHIP 46 SOUTH, RANGE 28 EAST  
 VILLAGE OF ESTERO, LEE COUNTY, FLORIDA

JOHNSTON  
 ENGINEERING  
 4800 UNIVERSITY BLVD., SUITE 200  
 WEST PALM BEACH, FLORIDA 33411-4200  
 TEL: 561-833-1111  
 FAX: 561-833-1112  
 WWW.JOHNSTON-ENG.COM

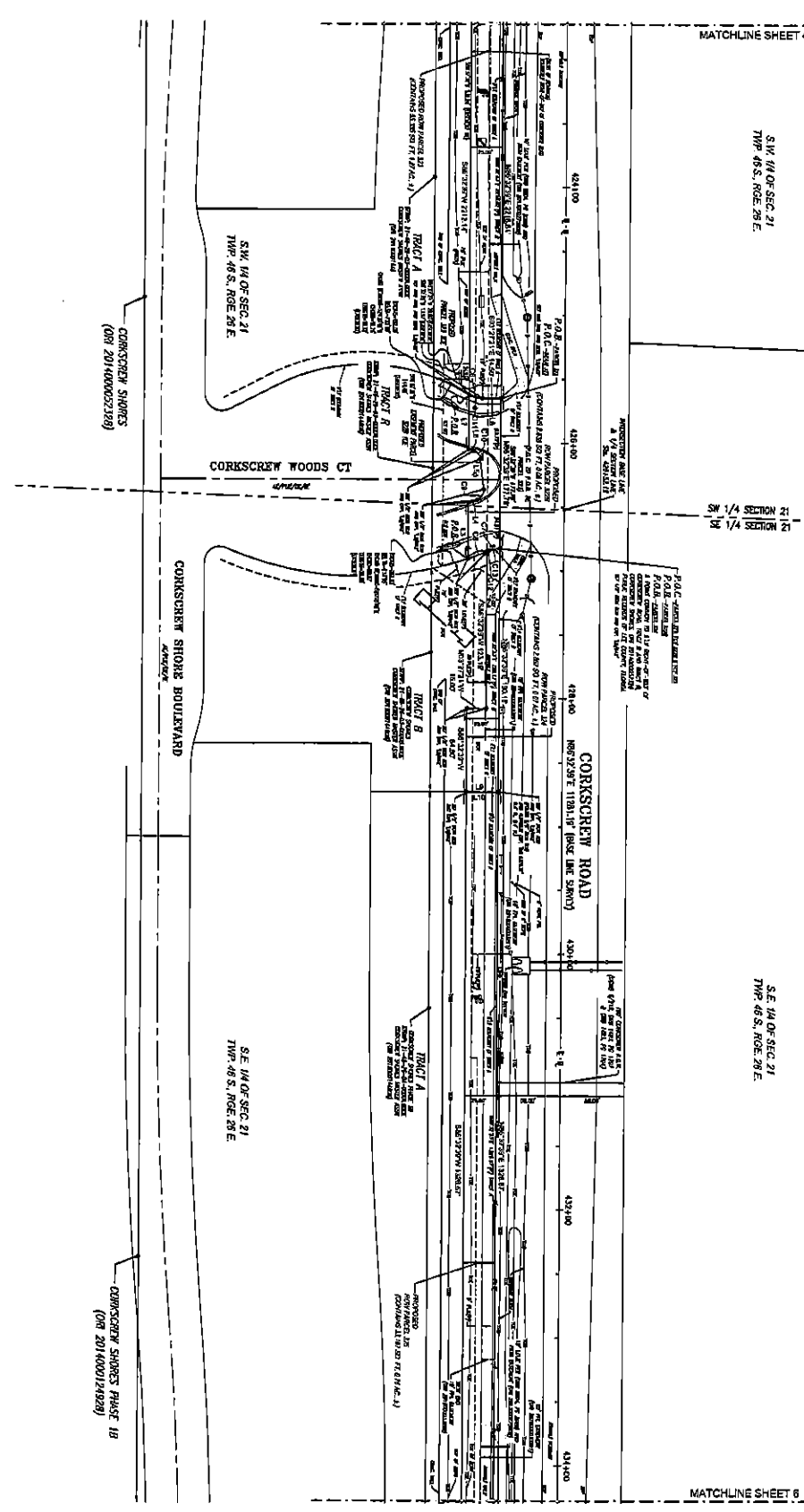
PROJECT NO. 20140925  
 DATE: 11-16-14  
 SCALE: AS SHOWN  
 SHEET NUMBER

- LEGEND**
- 1. BOUNDARY SURVEY
  - 2. CONCRETE DRIVE
  - 3. CONCRETE SIDEWALK
  - 4. CONCRETE CURB
  - 5. CONCRETE PAVEMENT
  - 6. ASPHALT DRIVE
  - 7. ASPHALT SIDEWALK
  - 8. ASPHALT CURB
  - 9. ASPHALT PAVEMENT
  - 10. ASPHALT DRIVE
  - 11. ASPHALT SIDEWALK
  - 12. ASPHALT CURB
  - 13. ASPHALT PAVEMENT
  - 14. ASPHALT DRIVE
  - 15. ASPHALT SIDEWALK
  - 16. ASPHALT CURB
  - 17. ASPHALT PAVEMENT
  - 18. ASPHALT DRIVE
  - 19. ASPHALT SIDEWALK
  - 20. ASPHALT CURB
  - 21. ASPHALT PAVEMENT
  - 22. ASPHALT DRIVE
  - 23. ASPHALT SIDEWALK
  - 24. ASPHALT CURB
  - 25. ASPHALT PAVEMENT
  - 26. ASPHALT DRIVE
  - 27. ASPHALT SIDEWALK
  - 28. ASPHALT CURB
  - 29. ASPHALT PAVEMENT
  - 30. ASPHALT DRIVE
  - 31. ASPHALT SIDEWALK
  - 32. ASPHALT CURB
  - 33. ASPHALT PAVEMENT
  - 34. ASPHALT DRIVE
  - 35. ASPHALT SIDEWALK
  - 36. ASPHALT CURB
  - 37. ASPHALT PAVEMENT
  - 38. ASPHALT DRIVE
  - 39. ASPHALT SIDEWALK
  - 40. ASPHALT CURB
  - 41. ASPHALT PAVEMENT
  - 42. ASPHALT DRIVE
  - 43. ASPHALT SIDEWALK
  - 44. ASPHALT CURB
  - 45. ASPHALT PAVEMENT
  - 46. ASPHALT DRIVE
  - 47. ASPHALT SIDEWALK
  - 48. ASPHALT CURB
  - 49. ASPHALT PAVEMENT
  - 50. ASPHALT DRIVE
  - 51. ASPHALT SIDEWALK
  - 52. ASPHALT CURB
  - 53. ASPHALT PAVEMENT
  - 54. ASPHALT DRIVE
  - 55. ASPHALT SIDEWALK
  - 56. ASPHALT CURB
  - 57. ASPHALT PAVEMENT
  - 58. ASPHALT DRIVE
  - 59. ASPHALT SIDEWALK
  - 60. ASPHALT CURB
  - 61. ASPHALT PAVEMENT
  - 62. ASPHALT DRIVE
  - 63. ASPHALT SIDEWALK
  - 64. ASPHALT CURB
  - 65. ASPHALT PAVEMENT
  - 66. ASPHALT DRIVE
  - 67. ASPHALT SIDEWALK
  - 68. ASPHALT CURB
  - 69. ASPHALT PAVEMENT
  - 70. ASPHALT DRIVE
  - 71. ASPHALT SIDEWALK
  - 72. ASPHALT CURB
  - 73. ASPHALT PAVEMENT
  - 74. ASPHALT DRIVE
  - 75. ASPHALT SIDEWALK
  - 76. ASPHALT CURB
  - 77. ASPHALT PAVEMENT
  - 78. ASPHALT DRIVE
  - 79. ASPHALT SIDEWALK
  - 80. ASPHALT CURB
  - 81. ASPHALT PAVEMENT
  - 82. ASPHALT DRIVE
  - 83. ASPHALT SIDEWALK
  - 84. ASPHALT CURB
  - 85. ASPHALT PAVEMENT
  - 86. ASPHALT DRIVE
  - 87. ASPHALT SIDEWALK
  - 88. ASPHALT CURB
  - 89. ASPHALT PAVEMENT
  - 90. ASPHALT DRIVE
  - 91. ASPHALT SIDEWALK
  - 92. ASPHALT CURB
  - 93. ASPHALT PAVEMENT
  - 94. ASPHALT DRIVE
  - 95. ASPHALT SIDEWALK
  - 96. ASPHALT CURB
  - 97. ASPHALT PAVEMENT
  - 98. ASPHALT DRIVE
  - 99. ASPHALT SIDEWALK
  - 100. ASPHALT CURB



SEE SHEET 2 OF 7 FOR BOUNDARY PARCELS DESCRIPTIONS

DATE	REVISION	BY	DESCRIPTION
04/21/2011	1	JK	INITIAL DESIGN
04/21/2011	2	JK	REVISED DESIGN
04/21/2011	3	JK	REVISED DESIGN
04/21/2011	4	JK	REVISED DESIGN
04/21/2011	5	JK	REVISED DESIGN
04/21/2011	6	JK	REVISED DESIGN
04/21/2011	7	JK	REVISED DESIGN
04/21/2011	8	JK	REVISED DESIGN
04/21/2011	9	JK	REVISED DESIGN
04/21/2011	10	JK	REVISED DESIGN
04/21/2011	11	JK	REVISED DESIGN
04/21/2011	12	JK	REVISED DESIGN
04/21/2011	13	JK	REVISED DESIGN
04/21/2011	14	JK	REVISED DESIGN
04/21/2011	15	JK	REVISED DESIGN
04/21/2011	16	JK	REVISED DESIGN
04/21/2011	17	JK	REVISED DESIGN
04/21/2011	18	JK	REVISED DESIGN
04/21/2011	19	JK	REVISED DESIGN
04/21/2011	20	JK	REVISED DESIGN
04/21/2011	21	JK	REVISED DESIGN
04/21/2011	22	JK	REVISED DESIGN
04/21/2011	23	JK	REVISED DESIGN
04/21/2011	24	JK	REVISED DESIGN
04/21/2011	25	JK	REVISED DESIGN
04/21/2011	26	JK	REVISED DESIGN
04/21/2011	27	JK	REVISED DESIGN
04/21/2011	28	JK	REVISED DESIGN
04/21/2011	29	JK	REVISED DESIGN
04/21/2011	30	JK	REVISED DESIGN
04/21/2011	31	JK	REVISED DESIGN
04/21/2011	32	JK	REVISED DESIGN
04/21/2011	33	JK	REVISED DESIGN
04/21/2011	34	JK	REVISED DESIGN
04/21/2011	35	JK	REVISED DESIGN
04/21/2011	36	JK	REVISED DESIGN
04/21/2011	37	JK	REVISED DESIGN
04/21/2011	38	JK	REVISED DESIGN
04/21/2011	39	JK	REVISED DESIGN
04/21/2011	40	JK	REVISED DESIGN
04/21/2011	41	JK	REVISED DESIGN
04/21/2011	42	JK	REVISED DESIGN
04/21/2011	43	JK	REVISED DESIGN
04/21/2011	44	JK	REVISED DESIGN
04/21/2011	45	JK	REVISED DESIGN
04/21/2011	46	JK	REVISED DESIGN
04/21/2011	47	JK	REVISED DESIGN
04/21/2011	48	JK	REVISED DESIGN
04/21/2011	49	JK	REVISED DESIGN
04/21/2011	50	JK	REVISED DESIGN



BOUNDARY DETAIL

DATE	REVISION	DESCRIPTION
04/21/2011	1	INITIAL DESIGN
04/21/2011	2	REVISED DESIGN
04/21/2011	3	REVISED DESIGN
04/21/2011	4	REVISED DESIGN
04/21/2011	5	REVISED DESIGN
04/21/2011	6	REVISED DESIGN
04/21/2011	7	REVISED DESIGN
04/21/2011	8	REVISED DESIGN
04/21/2011	9	REVISED DESIGN
04/21/2011	10	REVISED DESIGN
04/21/2011	11	REVISED DESIGN
04/21/2011	12	REVISED DESIGN
04/21/2011	13	REVISED DESIGN
04/21/2011	14	REVISED DESIGN
04/21/2011	15	REVISED DESIGN
04/21/2011	16	REVISED DESIGN
04/21/2011	17	REVISED DESIGN
04/21/2011	18	REVISED DESIGN
04/21/2011	19	REVISED DESIGN
04/21/2011	20	REVISED DESIGN
04/21/2011	21	REVISED DESIGN
04/21/2011	22	REVISED DESIGN
04/21/2011	23	REVISED DESIGN
04/21/2011	24	REVISED DESIGN
04/21/2011	25	REVISED DESIGN
04/21/2011	26	REVISED DESIGN
04/21/2011	27	REVISED DESIGN
04/21/2011	28	REVISED DESIGN
04/21/2011	29	REVISED DESIGN
04/21/2011	30	REVISED DESIGN
04/21/2011	31	REVISED DESIGN
04/21/2011	32	REVISED DESIGN
04/21/2011	33	REVISED DESIGN
04/21/2011	34	REVISED DESIGN
04/21/2011	35	REVISED DESIGN
04/21/2011	36	REVISED DESIGN
04/21/2011	37	REVISED DESIGN
04/21/2011	38	REVISED DESIGN
04/21/2011	39	REVISED DESIGN
04/21/2011	40	REVISED DESIGN
04/21/2011	41	REVISED DESIGN
04/21/2011	42	REVISED DESIGN
04/21/2011	43	REVISED DESIGN
04/21/2011	44	REVISED DESIGN
04/21/2011	45	REVISED DESIGN
04/21/2011	46	REVISED DESIGN
04/21/2011	47	REVISED DESIGN
04/21/2011	48	REVISED DESIGN
04/21/2011	49	REVISED DESIGN
04/21/2011	50	REVISED DESIGN

5 OF 7

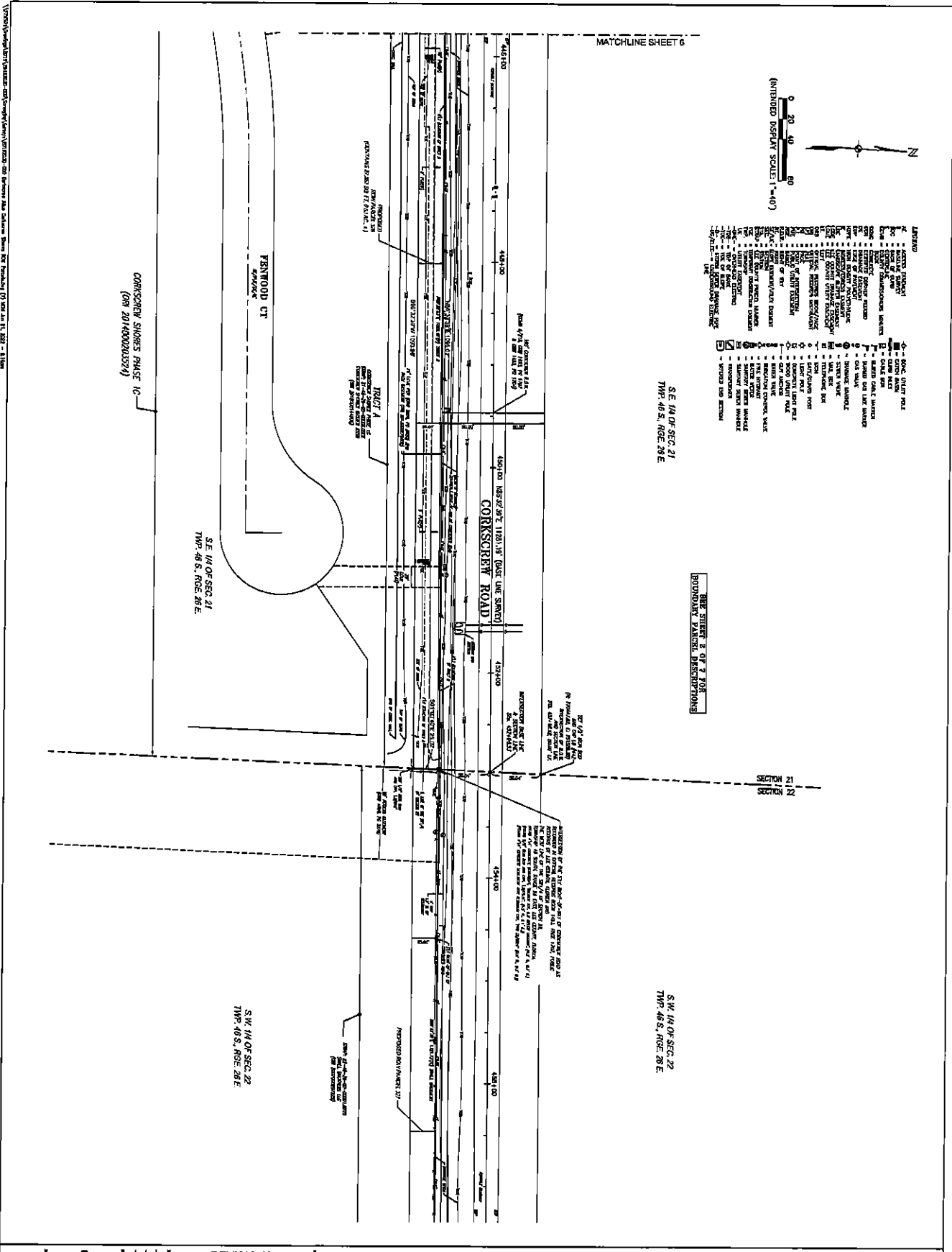
"CORKSCREW SHORES  
RIGHT-OF-WAY PARCELS 321,  
322A, 322B, 323, 324, 325 AND 326"  
SECTION 21, TOWNSHIP 46 SOUTH, RANGE 28 EAST  
VILLAGE OF ESTERO, LEE COUNTY, FLORIDA

BOUNDARY SURVEY

**JOHNSON**  
ENGINEERING  
APPROXIMATELY 100  
1000 W. GULF BLVD.  
SUITE 100  
FORT MYERS, FLORIDA 33901  
TEL: 888-757-4646  
WWW.JOHNSON-ENGINEERING.COM







<p>ENGINEERING</p> <p>11111 E. US HWY 90, SUITE 100 DADE COUNTY, FL 33158 TEL: 305.444.1234 WWW.JOLINSONENGINEERING.COM</p>	<p>BOUNDARY SURVEY</p>	<p>"CORKSCREW SHORES RIGHT-OF-WAY PARCELS 321, 322A, 322B, 323, 324, 325 AND 326"</p> <p>SECTION 21, TOWNSHIP 48 SOUTH RANGE 26 EAST VILLAGE OF ESTERO, LEE COUNTY, FLORIDA</p>	<p>REVISIONS</p> <table border="1"> <tr> <th>DATE</th> <th>DESCRIPTION</th> </tr> <tr> <td> </td> <td> </td> </tr> <tr> <td> </td> <td> </td> </tr> </table>	DATE	DESCRIPTION					<p>BOUNDARY DETAIL</p>	<p>SHEET NUMBER <b>7 OF 7</b></p>
DATE	DESCRIPTION										